



© 2013 Koninklijke Philips N.V.
All rights reserved.
Printed in Germany 09.13

www.philips.com/automotive

Philips Automotive Catalog 2013-2014



Philips Automotive

Catalog 2013-2014

Created by HSS France - 09.13

PHILIPS



PHILIPS

We create

Philips Automotive, a business group of Royal Philips, is the world's leading supplier of lamps to the automotive industry and aftermarket. Our technological innovations have been on the cutting-edge of automotive lighting for nearly a century and have led to the advancement and modernization of automotive lighting as we know it today.



Philips is the choice of all major car manufacturers

For nearly a century, Philips has been on the forefront of the automotive lighting industry, introducing technological innovations that have become standard on modern automobiles.



Philips quality and innovation: our key to success

Philips technologically advanced engineering and innovative development has led to some of the most advanced lighting solutions on the market. **Today, one in two cars in Europe and one in three worldwide is equipped with Philips lighting.**



Philips Original Quality:

our high manufacturing standards

Philips Automotive is dedicated to producing best-in-class products and services in the **Original Equipment Manufacturer** market as well as in **aftermarket.**

Our products are manufactured from high-quality materials and tested to the highest specifications to maximize the **safety** and **driving comfort** of our customers. Our entire production is meticulously tested, controlled and certified to the highest ECE requirements and ISO standards.*

We are committed to manufacturing processes of the highest quality that exceed current industry specifications while maintaining the sustainability of our business.

*ISO 9001, ISO 14001 and QSO 9000



Philips UV-quartz glass technology

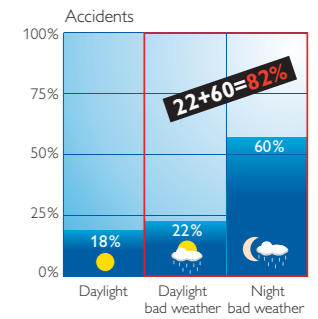
UV-Quartz glass is stronger than hard glass and highly resistant to temperature extremes and vibrations, which eliminates the risk of explosion. Philips quartz-glass lamps (filament 2 650° C and glass 800° C) are able to withstand severe thermal shock. With the capability of increased pressure inside the lamp, UV-quartz glass lamps produce a more powerful light. Philips special **anti-UV coating technology** protects the headlights against harmful ultraviolet radiation, making **Philips UV-coated quartz glass**



lamps perfect for all driving conditions and ensure their longevity.

We care

At Philips, our core values are at the heart of everything we do. All Philips Automotive products are designed and engineered based on these three core values: environmental friendliness and sustainability, safety and comfort, innovation and style.



Did you know that around 80% of all traffic accidents occur at night or in bad weather?



Feel safe, drive safe

Road safety begins with seeing and being seen. Light is a fundamental part of the driving experience and light is the first and only part of the safety circle that actually helps prevent accidents. Philips promotes active safety protection to prevent accidents by increasing overall visibility and road illumination. This allows drivers to be seen sooner and to see further down the road so they can avoid potential hazards. When combined with passive vehicle safety features, Philips active safety lighting solutions help enhance overall driver confidence and promote a safer driving experience. Our lighting solutions produce a powerful and precise beam of light with maximum output combined with long-lasting performance. We consistently produce the best, most efficient lighting solutions because we know that our high-quality lighting may one day save a life.



Drive with care

Our breakthrough use of LEDs and our xenon range means **more light** and **less energy**. Our goal is to **minimize environmental damage** in everything we do. We produce reliable, longer-lasting products that reduce waste in compliance with the EU Waste Electrical and Electronic Equipment Directive (WEEE). We lead the lighting industry in reducing the amount of hazardous material used, going beyond the EU RoHS requirements for mercury.



Pb free



Drive with style

Customers are looking for **performance** and **innovation** without sacrificing style. Philips is on the forefront of producing stylish lighting solutions for the most demanding drivers. Our Xenon BlueVision ultra is the ultra-stylish light that your customers have been looking for. Its distinctive blue effect will make vehicles **stand out with style and elegance**. The Philips LED DaylightGuide Daytime Running Lights, with its revolutionary lens and innovative Lightguide technology, offer an exclusive design signature.



Looking into the future



Philips Automotive is committed to offering new and innovative lighting solutions that are on the forefront of automotive lighting technology. We are constantly renewing our product line in order to deliver the most technologically advanced and consumer-oriented lighting solutions on the market today. As the world leader in automotive lighting, Philips Automotive offers best-in-class lighting solutions of the highest quality, always surpassing our customers' expectations.

Our commitment to quality and innovation continues with our investment in organic light-emitting diodes called OLEDs. Based on semiconductor technology, these are powerful and extremely efficient sources of light that will revolutionize the automotive lighting industry. Unlike incandescent bulbs, in which the current flows through a wire to generate light, or fluorescent lights, in which the current is passed through a gas, with OLEDs the current flows through one or more extremely thin organic semiconductor layers positioned between two electrodes. The organic layer is based on a special carbon compound and when the electrodes are energized, current flows through the organic layer causing it to emit light.

OLEDs offer unbeatable energy efficiency and the technology opens up new opportunities for automotive lighting with unique styling. As brand signature becomes more and more important to carmakers, OLEDs will allow for new and innovative ways of creating unique styling. Because OLEDs are a complete lighting system and do not need reflectors, lenses, diffusers or light guides like halogen or LEDs, automotive designers will have more creative freedom and need less space than with previous lighting solutions. The first OLED application for automobiles will be based on a glass substrate and will initially be a hybrid LED/OLED design, combining the strengths of both LEDs and OLEDs to create a new and innovative way forward.



Table of contents

We create, we care	2
Looking into the future	4
Xenon lighting solutions introduction	6
Xenon Vision • Xenon X-tremeVision	8
Xenon BlueVision ultra • Our pro-active solution against xenon lamp piracy	9
Sales and marketing tools	11
12V Car lighting introduction	12
Vision • VisionPlus	14
X-tremeVision	15
LongLife EcoVision • BlueVision ultra	16
12V Which lamp for which function	18
12V Sales and marketing tools	20
12V Spare kit essentials	37
LED interior lighting for cars and trucks introduction	40
12-24V X-tremeVision LED	42
Sales and marketing tools	43
LED Daytime Running Light solutions introduction	45
LED DayLight 4 • LED DayLightGuide	48
24V Bus and truck lighting introduction	50
MasterLife	51
MasterDuty • MasterDuty BlueVision	52
24V Which lamp for which function	53
Sales and marketing tool	59
24V Spare kits	60
12V Two-wheeler lighting introduction	61
VisionMoto • CityVision Moto	63
X-tremeVision Moto • BlueVision Moto	64
Which lamp for which function	65
Sales and marketing tool	67
Headlight restoration kit introduction	68
Headlight restoration kit	69
Sales and marketing tool	69
LED Bike lighting solutions introduction	70
Front lights: Saferide LED Bikelight 40 - 60	71
Saferide LED Bikelight 80 • Activeride LED Dual beam 800	72
Rear lights: LED Lumiring • LED Lightring	73
Accessories: Handlebar brackets • Seatpost holder	74
LED Inspection and LED Work lamps introduction	77
LED Penlight Professional • LED Penlight Premium USB-Rechargeable	79
RCH20 • RCH30 Rechargeable products	80
CBL20 • CBL30 Multivoltage products	81
MDLS Multidirectional lighting system Multivoltage	82
Sales and marketing tools	84
Technical illustrations - lamps	85
Technical illustrations - bases	87
Product index	88
Philips new packaging design concept	95



Xenon lighting solutions

Discover our full range of xenon lighting solutions, the number one choice in xenon lighting. Our xenon range produces even more light to satisfy the most demanding drivers while maintaining its high **Original Equipment quality** and **superior performance**. Make sure to order the genuine Original Equipment Quality xenon lighting from Philips, the inventor of xenon lighting. Philips innovative technology, materials, high-quality production and testing are simply irreplaceable. Philips xenon lighting is available for automobiles, trucks, buses, and other large commercial vehicles.

Which lamp do you need?



Safety

Ideal for replacement

Xenon Vision

Xenon Vision

Standard xenon lamp 4 600 K

Standard xenon

Available in D1S, D1R, D2S, D2R, D3S, D3R, D4S, D4R

up to 50% more light*

Xenon X-tremeVision

Xenon X-tremeVision

Standard xenon lamp 4 800 K

Standard xenon

Available in D1S, D2S, D2R, D3S

Safety and style

Maximum blue effect up to 6 000 K

Xenon BlueVision ultra

Xenon BlueVision ultra

Standard xenon lamp 6 000 K

Standard xenon

Available in D1S, D2S, D2R



To find the type of lamp you need for your car visit our **12V application guide**

Safety

Xenon Vision Ideal for replacement

- Philips Original quality xenon technology
- Single-lamp replacement technology: new lamp matches color temperature of the unchanged one
- Economical choice
- Homologated 4 600 K

Philips Xenon Vision replaces a single burned-out lamp while matching the color of the unchanged one. Xenon Vision is the ideal replacement lamp, and it's economical too! Its new single-lamp replacement technology allows for one-by-one replacement while still matching the color temperature of the unchanged lamp. Xenon Vision is the perfect solution for single-lamp replacement.



Style

Xenon BlueVision ultra Maximum blue effect

- Distinctive cool bluish light - up to 6 000 K
- Designed for the most demanding drivers
- Maximum style
- Philips Original quality xenon technology

Philips has created the Xenon BlueVision ultra for drivers looking for maximum style and ultimate brightness. It produces an ultra-stylish and distinctive blue effect (up to 6 000 K) while delivering an ultra-powerful light. It offers 10% more light compared to the previous generation (Philips Xenon UltraBlue).



More light

Xenon X-tremeVision

Up to 50% more light*

- Ultimate performance
- Up to 50% more light*
- Maximum safety and visibility
- Designed for demanding drivers
- Philips Original quality xenon technology

Producing up to 50% more light,* this high-power xenon lighting solution provides maximum brightness for maximum visibility to satisfy the needs of the most demanding drivers. Philips Xenon X-tremeVision is the ultimate choice for drivers looking for the best xenon solution.



Our pro-active solution against xenon lamp piracy

Counterfeit Philips xenon lamps are becoming increasingly available through online and offline distribution channels. These counterfeit lamps are poor imitations of inferior quality. Buying, selling or being in possession of counterfeit products is illegal.

To protect our customers and all consumers from counterfeit Philips lighting products, we've created a pro-active solution using unique, state-of-the-art technology. **Philips Certificate of Authenticity (COA) is now available on every new xenon lamp package you order.**

Using the **Security code**, as well as other special security elements, professionals can **verify the authenticity of the Philips product on a dedicated, fully secure internet platform**. Professionals can either scan the QR code or go to www.philips.com/original. Philips is committed to helping protect its customers from poor imitations of inferior quality that may damage a vehicle or result in personal injury.

Always ensure that you are buying genuine Philips products.



To connect to the secure internet platform www.philips.com/original



*Compared to a standard lamp

D1S Vision

Ordering number	V	W	Base	GOC	EAN1	ECE	EAN3	Packing quantity
85415VIS1	85	35	PK32d-2	36489733		E1 04J	8727900364903	2
85415VIC1	85	35	PK32d-2	36473633		E1 04J	8727900364743	2

D1R Vision

Ordering number	V	W	Base	GOC	EAN1	ECE	EAN3	Packing quantity
85409VIC1	85	35	PK32d-3	36475033		E1 05R	8727900364767	2

D1S BlueVision ultra

Ordering number	V	W	Base	GOC	EAN1	ECE	EAN3	Packing quantity
85415BVUS1	85	35	PK32d-2	36550433		E1 04J	8727900365511	2
85415BVUC1	85	35	PK32d-2	36546733		E1 04J	8727900365443	2

D1S X-tremeVision

Ordering number	V	W	Base	GOC	EAN1	ECE	EAN3	Packing quantity
85415XVS1	85	35	PK32d-2	36458333		E1 04J	8727900364613	2
85415XVC1	85	35	PK32d-2	36441533		E1 04J	8727900364439	2

D2S Vision

Ordering number	V	W	Base	GOC	EAN1	ECE	EAN3	Packing quantity
85122VIS1	85	35	P32d-2	36491033		E1 03V	8727900364927	2
85122VIC1	85	35	P32d-2	36477433		E1 03V	8727900364781	2

D2R Vision

Ordering number	V	W	Base	GOC	EAN1	ECE	EAN3	Packing quantity
85126VIS1	85	35	P32d-3	36493433		E1 03U	8727900364941	2
85126VIC1	85	35	P32d-3	36479833		E1 03U	8727900364804	2

D2S BlueVision ultra

Ordering number	V	W	Base	GOC	EAN1	ECE	EAN3	Packing quantity
85122BVUS1	85	35	P32d-2	36552833		E1 03V	8727900365535	2
85122BVUC1	85	35	P32d-2	36545033		E1 03V	8727900365474	2

D2R BlueVision ultra

Ordering number	V	W	Base	GOC	EAN1	ECE	EAN3	Packing quantity
85126BVUS1	85	35	P32d-3	36554233		E1 03U	8727900365559	2
85126BVUC1	85	35	P32d-3	36548133		E1 03U	8727900365498	2

D2S X-tremeVision

Ordering number	V	W	Base	GOC	EAN1	ECE	EAN3	Packing quantity
85122XVS1	85	35	P32d-2	36462033		E1 03V	8727900364637	2
85122XVC1	85	35	P32d-2	36444633		E1 03V	8727900364453	2

D2R X-tremeVision

Ordering number	V	W	Base	GOC	EAN1	ECE	EAN3	Packing quantity
85126XVS1	85	35	P32d-3	36464433		E1 03U	8727900364651	2
85126XVC1	85	35	P32d-3	36446033		E1 03U	8727900364477	2

D3S Vision

Ordering number	V	W	Base	GOC	EAN1	ECE	EAN3	Packing quantity
42403VIS1	42	35	PK32d-5	36495833		E4 0A9	8727900364965	2
42403VIC1	42	35	PK32d-5	36481133		E4 0A9	8727900364828	2

D3R Vision

Ordering number	V	W	Base	GOC	EAN1	ECE	EAN3	Packing quantity
42306VIC1	42	35	PK32d-6	36483533		E4 0B0	8727900364842	2

D3S X-tremeVision

Ordering number	V	W	Base	GOC	EAN1	ECE	EAN3	Packing quantity
42403XVS1	42	35	PK32d-5	36466833		E4 0A9	8727900364675	2
42403XVC1	42	35	PK32d-5	36448433		E4 0A9	8727900364491	2

D4S Vision

Ordering number	V	W	Base	GOC	EAN1	ECE	EAN3	Packing quantity
42402VIC1	42	35	P32d-5	36485933		E4 0A5	8727900364866	2

D4R Vision

Ordering number	V	W	Base	GOC	EAN1	ECE	EAN3	Packing quantity
85126VIS1	85	35	P32d-3	36493433		E1 03U	8727900364941	2

Xenon sales and marketing tools

Take advantage of our new specimen packaging that you may use in your store, shop or gas station to avoid theft and save money.



On-shelf presentation specimen packaging

Description	Ordering number	GOC	EAN1	EAN3	MOQ
D1S VI S1 Specimen	85415VISX	36504733	8727900365047	8727900365054	2
D2S VI S1 Specimen	85122VISX	36507833	8727900365078	8727900365085	2
D2R VI S1 Specimen	85126VISX	36511533	8727900365115	8727900365122	2
D3S VI S1 Specimen	42403VISX	36515333	8727900365153	8727900365160	2
D1S BVU S1 Specimen	85415BVUSF	36556630	8727900365566	8727900365573	2
D2S BVU S1 Specimen	85122BVUSF	36558030	8727900365580	8727900365597	2
D2R BVU S1 Specimen	85126BVUSF	36560330	8727900365603	8727900365610	2
D1S XV S1 Specimen	85415XVSX	36503033	8727900365030	8727900365061	2
D2S XV S1 Specimen	85122XVSX	36509233	8727900365092	8727900365108	2
D3S XV S1 Specimen	42403XVSX	36517733	8727900365177	8727900365184	2

*MOQ: Minimum Ordering Quantity



12V Car lighting

Philips Automotive is the world's leading automotive lighting manufacturer and is renowned for its technological innovations, its use of high-quality materials and its best-in-class products. Philips commitment to providing the highest quality standards makes it the preferred partner of the world's largest car manufacturers. Philips 12V Car lighting range is a family of lighting solutions designed for the needs and lifestyles of all consumers.

Which lamp do you need?



Feel safe, drive safe

30% more light	60% more light	100% more light
 Vision	 VisionPlus	 X-tremeVision
 Standard Vision +30%	 Standard VisionPlus +60%	 Standard X-tremeVision +100%
★★★★★ Overall performance Light color: 4000K Beam performance: +30% Lifetime: +30% Available in H1, H3, H4, H7, HB3, HB4, H11	★★★★★ Overall performance Light color: 4000K Beam performance: +60% Lifetime: +60% Available in H1, H4, H7	★★★★★ Overall performance Light color: 4000K Beam performance: +100% Lifetime: +100% Available in H1, H4, H7

Drive with care

Lifetime x4


 LongLife EcoVision


4x LIFETIME

★★★★★
 Overall performance
 Light color: 3000K
 Beam performance: +100%
 Lifetime: +400%
 Available in H1, H3, H4, H7, H11

Drive with style

Xenon ultimate effect


 BlueVision ultra


 BlueVision ultra
 Standard

★★★★★
 Overall performance
 Light color: 4000K
 Beam performance: +30%
 Lifetime: +30%
 Available in H1, H3, H4, H7, HB3, HB4, H11



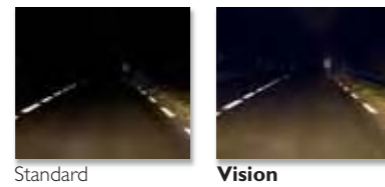
To find the type of lamp you need for your car visit our [12V application guide](#)

More light

Vision 30% more light*

- Competitive price
- Greater light-beam projection
- High-quality quartz glass
- Original Equipment quality

Producing 30% more light compared to a standard lamp, Vision ensures excellent light-beam performance at a very competitive price with the Original Equipment quality. Our Vision bulbs produce a longer light-beam projection for greater safety and comfort.



Standard

Vision



H11

Available in



H1



H3



H4



H7



HB3



HB4

More light

VisionPlus 60% more light*

- Superior quality with enhanced visibility
- Up to 25-meters longer beam*
- High-quality quartz glass
- Greater driving comfort and safety

Faster reaction time can save lives. Philips VisionPlus produces 60% more light,* which allows drivers to see farther for greater safety and comfort. Philips VisionPlus is the performance choice for safety-conscious drivers. Offering high performance and excellent value, VisionPlus is the right choice for today's demanding drivers.



Standard

VisionPlus



Available in



H1

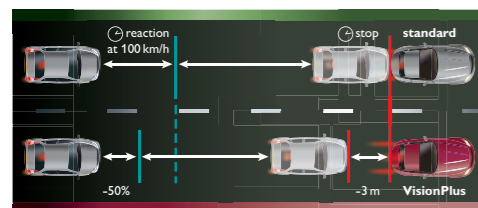


H4



H7

VisionPlus signaling



VisionPlus signaling advantages

- Brake lighting is visible earlier, thanks to a more powerful light output.
- The following vehicle's breaking distance can be reduced by up to 3 meters at 100 km/h.

*Compared to a standard lamp



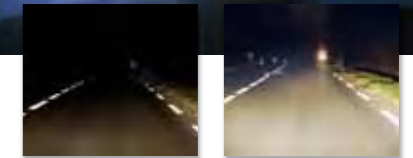
More light

X-tremeVision Up to 100% more light*

- Maximum comfort and safety
- Up to 35-meter longer beam*
- Unique filament design
- Optimized high-precision geometry
- High-pressure gas filling for optimal lifetime
- High-quality quartz glass

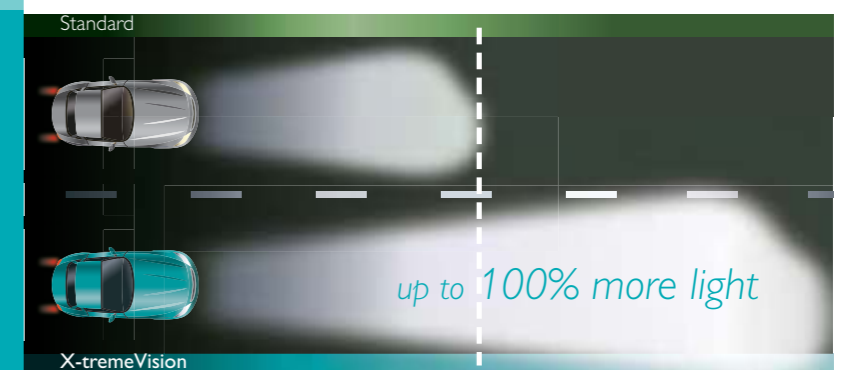
Boost your vision with X-tremeVision! Philips X-tremeVision offers up to 100% more light* for drivers who need to see farther with a light beam up to 35 meters longer than a standard lamp. Based on a unique filament design and optimized geometry, X-tremeVision is engineered with state-of-the-art technology for ultimate performance and bright, white light where it matters the most.

*Compared to a standard lamp



Standard

X-tremeVision



X-tremeVision

up to 100% more light



X-tremeVision projects up to 100% more light* on the road for maximum safety and visibility.



Available in



H1



H4



H7

Less replacement

LongLife EcoVision Lifetime x4

- Lasts 4 times longer*
- No replacement necessary for 100 000 km
- Reduced maintenance
- Less waste, drive greener
- High-quality quartz glass



Available in



Tired of changing your light bulbs all the time? With 4x lifetime of a standard lamp, Philips LongLife EcoVision is the choice for drivers seeking to minimize maintenance on their vehicles. With Philips LongLife EcoVision drivers don't have to worry about changing a headlamp for at least 100 000 km. It is the right choice for drivers looking for an environmentally friendly lighting solution.

*Compared to a standard lamp

Style

BlueVision ultra Xenon ultimate effect

- Unique bluish xenon effect in the headlight
- 4 000 K bright white light on the road
- Exclusive Gradient Coating™ technology
- High-quality quartz glass

The Philips BlueVision ultra is for drivers seeking to personalize their vehicles. With BlueVision ultra, drivers enjoy a blue xenon ultimate effect thanks to its unique Gradient Coating™ technology, which is unmatched in a fully homologated road-legal lamp. Providing 4 000 K bright white light on the road and a unique bluish xenon effect in the headlight, the BlueVision ultra is the right choice for drivers seeking to drive with style without compromising on safety.

Available in



Standard

BlueVision ultra



Which lamp for which function



Vision

VisionPlus

X-tremeVision

LongLife EcoVision

BlueVision ultra

12620 12475 12258 12311 12336 12342 12972 12360 12361 9145 12362 9008 9005 9006 9007 9012 12085 12277 12278

R2 R2 Visio H1 H2 H3 H4 H7 H8 H9 H10 H11 H13 HB3 HB4 HB5 HIR2 PS19W P13W PSX26W

Low beam - high beam - additional high beam

12498 12496 12496sv 12065 12065 12356 12146 12271 12188 12180 12190 12190

P21W PY21W PY21Wsv W21W WY21W H21W HY21W PCY16W PSY24W PSY24Wsv PY24W PY24Wsv

Front indicators

12256 12961 12521

W3W W5W T5 BAX

Dashboard lights

12961 12844 12866 12023 12040 12023 12023

W5W C5W FEST10W H5W WBT10 W5W LED Festoon LED

Interior lights

12961 12396 12256 12821 12929

W5W WY5W W3W R5W T4W

Side indicators

12960 12961 12066 12040 12929 12821 12036 12023

W3W W5W W21/5W WBT10 T4W R5W H6W H5W

Front parking lights

12258 12336 12342 12972 12360 12362 12366 9005 9006 12059 12060 12276 12086

H1 H3 H4 H7 H8 H11 H16 HB3 HB4 H27/1W H27/2W PSX24W PS24W

Front fog lights

Available in Standard Daytime Running Lights



12256 12961 12067 12065 12814

W3W W5W W16W W21W R10W

3rd stop light

12498 12496 12495sv 12036 12356 12146 12067 12065 12065 12814 12814 12275 12180 12190 12190

P21W PY21W PY21Wsv H6W H21W HY21W W16W W21W WY21W R10W RY10W PSY19W PSY24Wsv PY24W PY24Wsv

Rear indicators

12821 12866 12844

R5W FEST10W C5W

Trunk lights

12498 12036 12356 12067 12065 12814 12085 12276

P21W H6W H21W W16W W21W R10W PS19W PSX24W

Reversing light



12961 12844 12821

W5W C5W R5W

Glove compartment lights

12036 12821 12814 12929

H6W R5W R10W T4W

Rear parking lights

12821 12814 12256 12961 12844

R5W R10W W3W W5W C5W

License plate lights

12498 12088 12356 12067 12085

P21W PR21W H21W W16W PS19W

Rear fog lights

12594 12499 12498 12088 12495 12067 12065 12066

P21/4W P21/5W P21W PR21W PR21/5W W16W W21W W21/5W

Stop lights

12V Car lighting

12V sales and marketing tools

We've created useful tools to satisfy your customers' needs and expectations and to help you market and sell Philips Automotive products with success. Do not hesitate to place your order using the ordering information or simply contact your Philips sales representative!

Light & More campaign



Light & More counter display
with luxmeter
10 H7 PR C1 | 5 H4 PR C1
2 H7 XV S2 | 1 H4 XV S2

Goodies for garages

These goodies are offered with certain orders. For more information, please contact your Philips sales representative.



Luxmeter

Lamp installation tools

Overall

New More light campaign



More light floor display

Blister pack version with Headlight restoration kit
35 H7 XV B1 | 10 H4 XV B1 | 14 H1 XV B1
14 H7VP B1 | 5 H4VP B1 | 7 H1 VP B1
14 H7Vision B1 | 10 H4Vision B1
7 H1 Vision B1+ 6 Headlight restoration kits

More light floor display

Special and blister pack version with Headlight restoration kit
20 H7 XV S2 | 8 H4 XV S2 | 8 H1 XV S2
8 H7VP S2 | 4 H4VP S2 | 4 H1 VP S2
14 H7Vision B1 | 10 H4Vision B1
7 H1 Vision B1+ 6 Headlight restoration kits

More light floor display

Blister pack version
35 H7 XV B1 | 10 H4 XV B1
14 H1 XV B1 | 14 H7VP B1
5 H4VP B1 | 7 H1 VP B1
14 H7Vision B1 | 10 H4Vision B1
7 H1 Vision B1

More light floor display

Special and blister pack version
20 H7 XV S2 | 8 H4 XV S2
8 H1 XV S2 | 8 H7VP S2
4 H4VP S2 | 4 H1 VP S2
14 H7Vision B1 | 10 H4Vision B1
7 H1 Vision B1

More light counter display

2 H7 XV S2 | 2 VP H7 S2
4 H7Vision B1 | 2 H4 XV S2
2 H4VP S2 | 4 H4Vision B1

X-tremeVision/BlueVision ultra



XV/BVU floor display
5 H1 XV S2 | 10 H4 XV S2
15 H7 XV S2 | 5 H1 BVU S2
10 H4 BVU S2 | 15 H7 BVU S2

XV/BVU counter display
1 H1 XV S2 | 1 H4 XV S2
1 H7 XV S2 | 1 H1 BVU S2
1 H4 BVU S2 | 1 H7 BVU S2

X-tremeVision



X-tremeVision counter display
5 H4 XV B1 | 12 H7 XV B1

LongLife EcoVision



LongLife EcoVision counter display
5 H4 B1 | 12 H7 B1

12V tools ordering information

Description	Ordering number	GOC	EAN1	EAN3
Light & more counter display + luxmeter	55991CX	36360966	8727900363609	8727900364323
Light & more counter display + luxmeter	55992CX	36433066	8727900364330	8727900364347
X-treme Vision/BlueVision ultra floor display	55915XD	38060666	8727900380606	8727900380613
X-treme Vision/BlueVision ultra counter display	55947XD	38175766	8727900381757	8727900381764
X-treme Vision counter display	55910XD	38038566	8727900380385	8727900380392
LongLife EcoVision counter display	55947XD	38175766	8727900381757	8727900381764
More light floor display - Special and blister pack version	56153SD	38857266	8727900388572	8727900388589
More light floor display - Blister pack version	56154BD	38859666	8727900388596	8727900388602
More light floor display - Special and blister pack version + Headlight restoration kit	56175SD	38881766	8727900388817	8727900388824
More light floor display - Blister pack version + Headlight restoration kit	56176BD	38883166	8727900388831	8727900388848
More light counter display	56155SD	38861966	8727900388619	8727900388626

New

Philips metallic wall dispenser

- Resistant metallic body
- Contains a lock for more safety
- Two handy drawers for signaling lamps
- External drawer for your tools
- A lamp tester may be included
- Business card holder
- Philips marketing information on the inside door is adaptable or replacable



Dimensions: 595 x 370 x 176 mm

This practical metallic wall dispenser is sold together with certain Philips product orders. It may also be delivered filled with Philips lighting products (see composition).

To place an order, please contact your Philips sales representative.

Philips metallic wall dispenser

Description	Ordering number	GOC	EAN1	EAN3
Metallic wall dispenser	56208CD	39041466	8727900390414	8727900390421
Metallic wall dispenser + lamp tester	56202CD	39929266	8727900390292	8727900390308

Philips metallic wall dispenser content

Description	V	W	Ordering number	Qty
H1 PR	12V	55W	12258PR	10
H3 PR	12V	55W	12336PR	10
H4 PR	12V	60/55W	12342PR	10
H7 PR	12V	55W	12972PR	20
H7 LL	12V	55W	12972LL	10
W1,2W	12V	1.2W	12516CP	20
W5W	12V	5W	12961CP	20
WY5W	12V	5W	12396CP	10
C10W	12V	10W	12866CP	10
C5W	12V	5W	12844CP	10
P21W	12V	21W	12498CP	20
PY21W	12V	21W	12496CP	10
P21/4W	12V	21/4W	12594CP	10
P21/5W	12V	21/5W	12499CP	20
R5W	12V	5W	12821CP	20
R10W	12V	10W	12814CP	20
T4W	12V	4W	12929CP	20

Tools images are non-contractual. May be modified by Philips.

H1 Vision



Ordering number	V	W	Base	GOC	EAN1	ECE	EAN3	Packing quantity
12258PRB1	12	55	P14,5s	47516930		E1 21P	8711500475176	10
12258PRC1	12	55	P14,5s	47518360		E1 21P	8711500475190	100

H1 VisionPlus



Ordering number	V	W	Base	GOC	EAN1	ECE	EAN3	Packing quantity
12258VPS2	12	55	P14,5s	36322728		E1 21P	8727900363210	5
12258VPB1	12	55	P14,5s	36320330		E1 21P	8727900363197	10

H1 X-tremeVision



Ordering number	V	W	Base	GOC	EAN1	ECE	EAN3	Packing quantity
12258XVS2	12	55	P14,5s	36064628		E1 21P	8727900360653	5
12258XVB1	12	55	P14,5s	36067730		E1 21P	8727900360684	10

H1 LongLife EcoVision



Ordering number	V	W	Base	GOC	EAN1	ECE	EAN3	Packing quantity
12258LLECOS2	12	55	P14,5s	36064628		E1 21P	8727900362565	5
12258LLECOB1	12	55	P14,5s	36067730		E1 21P	8727900361971	10
12258LLECOC1	12	55	P14,5s	36187260		E1 21P	8727900361889	100

H1 BlueVision ultra



Ordering number	V	W	Base	GOC	EAN1	ECE	EAN3	Packing quantity
12258BVUSM	12	55	P14,5s	36062228		E1 21P	8727900360653	5
12258BVUB1	12	55	P14,5s	36069130		E1 21P	8727900360707	10

H1 Spot



Ordering number	V	W	Base	GOC	EAN1	ECE	EAN3	Packing quantity
12258SPC1	12	55	P14,5s	40460260		E1 21P	8711500474865	100

H2



Ordering number	V	W	Base	GOC	EAN1	ECE	EAN3	Packing quantity
12311C1	12	55	X511	47752160		E1 22B	8711500416070	100

H3 Vision



Ordering number	V	W	Base	GOC	EAN1	ECE	EAN3	Packing quantity
12336PRB1	12	55	PK22s	69561130		E1 21W	8711500695628	10
12336PRC1	12	55	PK22s	69534560		E1 21W	8711500695352	100

H3 LongLife EcoVision



Ordering number	V	W	Base	GOC	EAN1	ECE	EAN3	Packing quantity
12336LLECOC1	12	55	PK22s	77704160		E1 21W	8711500777058	100

H3 BlueVision ultra



Ordering number	V	W	Base	GOC	EAN1	ECE	EAN3	Packing quantity
12336BVUB1	12	55	PK22s	77688430		E1 21W	8711500776891	10

H4 Vision



Ordering number	V	W	Base	GOC	EAN1	ECE	EAN3	Packing quantity
12342PRB1	12	60/55	P43t-38	47480330		E1 2C3	8711500474810	10
12342PRC1	12	60/55	P43t-38	49099560		E1 2C3	8711500490988	100

H4 VisionPlus



Ordering number	V	W	Base	GOC	EAN1	ECE	EAN3	Packing quantity
12342VPS2	12	60/55	P43t-38	39925728		E1 2C3	8727900399240	5
12342VPB1	12	60/55	P43t-38	39934930		E1 2C3	8727900399332	10

H4 X-tremeVision



Ordering number	V	W	Base	GOC	EAN1	ECE	EAN3	Packing quantity
12342XVS2	12	60/55	P43t-38	35024128		E1 2C3	8727900350258	5
12342XVB1	12	60/55	P43t-38	35038830		E1 2C3	8727900350395	10

H4 LongLife EcoVision



Ordering number	V	W	Base	GOC	EAN1	ECE	EAN3	Packing quantity
12342LLECOS2	12	60/55	P43t-38	36257228		E1 2C3	8727900362589	5
12342LLECOB1	12	60/55	P43t-38	36198830		E1 2C3	8727900361995	10
12342LLECOC1	12	60/55	P43t-38	36189660		E1 2C3	8727900361919	100

H4 BlueVision ultra



Ordering number	V	W	Base	GOC	EAN1	ECE	EAN3	Packing quantity
12342BVUSM	12	60/55	P43t-38	35034028		E1 2C3	8727900350357	5
12342BVUB1	12	60/55	P43t-38	35030230		E1 2C3	8727900350319	10

H7 Vision



Ordering number	V	W	Base	GOC	EAN1	ECE	EAN3	Packing quantity
12972PRB1	12	55	PX26d	40607130		E1 22Z	8711500406088	10
12972PRC1	12	55	PX26d	40593760		E1 22Z	8711500405944	100

H7 VisionPlus



Ordering number	V	W	Base	GOC	EAN1	ECE	EAN3	Packing quantity
12972VPS2	12	55	PX26d	39938728	8 727900 399387	E1 22Z	8727900399370	5
12972VPB1	12	55	PX26d	39936330	8 727900 399363	E1 22Z	8727900399356	10

H7 X-tremeVision



Ordering number	V	W	Base	GOC	EAN1	ECE	EAN3	Packing quantity
12972XVS2	12	55	PX26d	35026528	8 727900 350265	E1 22Z	8727900350272	5
12972XVB1	12	55	PX26d	36320330	8 727900 350401	E1 22Z	8727900350418	10

H7 LongLife EcoVision



Ordering number	V	W	Base	GOC	EAN1	ECE	EAN3	Packing quantity
12972LLECOS2	12	55	PX26d	36259628	8 727900 362596	E1 22Z	8727900362602	5
12972LLECOB1	12	55	PX26d	36200830	8 727900 362008	E1 22Z	8727900362015	10
12972LLECOB1	12	55	PX26d	36192660	8 727900 361926	E1 22Z	8727900361933	100

H7 BlueVision ultra



Ordering number	V	W	Base	GOC	EAN1	ECE	EAN3	Packing quantity
12972BVUSM	12	55	PX26d	35036428	8 727900 350364	E1 22Z	8727900350371	5
12972BVUB1	12	55	PX26d	35032630	8 727900 350326	E1 22Z	8727900350333	10

H8



Ordering number	V	W	Base	GOC	EAN1	ECE	EAN3	Packing quantity
12360B1	12	35	PGJ19-1	82416530	8 711500 824165	E1 24F	8727900362909	10
12360C1	12	35	PGJ19-1	47582444	8 711500 475824	E1 24F	8711500490681	50

H9



Ordering number	V	W	Base	GOC	EAN1	ECE	EAN3	Packing quantity
12361B1	12	65	PGJ19-5	36308130	8 727900 363081	E1 25C	8727900363098	10
12361C1	12	65	PGJ19-5	47584844	8 711500 475848	E1 25C	8711500490698	50

H10



Ordering number	V	W	Base	GOC	EAN1	ECE	EAN3	Packing quantity
9145C1	12	45	PY20d	52974560	8 711559 529745	E1 25J	8711559529769	100

H11 Vision



Ordering number	V	W	Base	GOC	EAN1	ECE	EAN3	Packing quantity
12362PRB1	12	55	PGJ19-2	36428630	8 727900 364286	E1 25M	8727900364293	10

H11 Vision



Ordering number	V	W	Base	GOC	EAN1	ECE	EAN3	Packing quantity
12362PRC1	12	55	PGJ19-2	36430944	8 727900 364309	E1 25M	8727900364316	50

H11 LongLife EcoVision



Ordering number	V	W	Base	GOC	EAN1	ECE	EAN3	Packing quantity
12362LLECOB1	12	55	PGJ19-2	36310430	8 727900 363104	E1 25M	8727900363111	10
12362LLECOB1	12	55	PGJ19-2	36194044	8 727900 361940	E1 25M	8727900361957	50

H11 BlueVision ultra



Ordering number	V	W	Base	GOC	EAN1	ECE	EAN3	Packing quantity
12362BVUB1	12	55	PGJ19-2	36216930	8 727900 362169	E1 25M	8727900362176	10

HIR2 LongLife



Ordering number	V	W	Base	GOC	EAN1	ECE	EAN3	Packing quantity
9012LLC1	12	55	PX22d	35125533	8 727900 351255	E1 2R9	8727900351262	15

H16



Ordering number	V	W	Base	GOC	EAN1	ECE	EAN3	Packing quantity
12366C1	12	19	PGJ19-3	36856760	8 727900 368567	-	8727900368574	100

HB3 Vision



Ordering number	V	W	Base	GOC	EAN1	ECE	EAN3	Packing quantity
9005PRB1	12	65	P20d	24724730	8 711500 247247	E1 22S	8711500247254	10
9005PRC1	12	65	P20d	24689960	8 711500 246899	E1 22S	8711500246905	100

HB3 BlueVision ultra



Ordering number	V	W	Base	GOC	EAN1	ECE	EAN3	Packing quantity
9005BVUB1	12	65	P20d	35097530	8 727900 350975	E1 22S	8727900350999	10

HB4 Vision



Ordering number	V	W	Base	GOC	EAN1	ECE	EAN3	Packing quantity
9006PRB1	12	55	P22d	24726130	8 711500 247261	E1 22T	8711500247278	10
9006PRC1	12	55	P22d	24687560	8 711500 246875	E1 22T	8711500246882	100

HB4 BlueVision ultra



Ordering number	V	W	Base	GOC	EAN1	ECE	EAN3	Packing quantity
9006BVUB1	12	55	P22d	35100230	8 727900 351002	E1 22T	8727900351019	10

HB5 9007



Ordering number	V	W	Base	GOC	EAN1	ECE	EAN3	Packing quantity
9007C1	12	65/55	PX29t	24550260	8 711500 245502	-	8711500245526	100

R2



Ordering number	V	W	Base	GOC	EAN1	ECE	EAN3	Packing quantity
12620B1	12	45/40	P45t-41	5543930	8 711500 055439	E1 2B5	8711559525327	10
12620C1	12	45/40	P45t-41	40085760	8 711500 400857	E1 2B5	8711500414755	100

R2 Visio



Ordering number	V	W	Base	GOC	EAN1	ECE	EAN3	Packing quantity
12475B1	12	45/40	P45t-41	24716230	8 711500 247162	E4 2CW	8711500247179	10
12475C1	12	45/40	P45t-41	40466460	8 711500 404664	E4 2CW	8711559514475	100

12V Signaling and interior lighting

P21W VisionPlus



Ordering number	V	W	Base	GOC	EAN1	ECE	EAN3	Packing quantity
12498VPB2	12	21	BA15s	36318030	8 727900 363180	E1 2CH	8727900363173	10

P21W LongLife EcoVision



Ordering number	V	W	Base	GOC	EAN1	ECE	EAN3	Packing quantity
12498LLECOB2	12	21	BA15s	38210530	8 727900 382105	E1 2CH	8727900382112	10
12498LLECOCP	12	21	BA15s	38198673	8 727900 381986	E1 2CH	8727900382006	200

P21W



Ordering number	V	W	Base	GOC	EAN1	ECE	EAN3	Packing quantity
12498B2	12	21	BA15s	5549130	8 711500 055491	E1 2CH	8711559520131	10
12498CP	12	21	BA15s	49078073	8 711500 490780	E1 2CH	8711500490803	200

P21/4W



Ordering number	V	W	Base	GOC	EAN1	ECE	EAN3	Packing quantity
12594B2	12	21/4	BAZ15d	40485530	8 711500 404855	E1 2BA	8711500471017	10
12594CP	12	21/4	BAZ15d	48433873	8 711500 484338	E1 2BA	8711500484352	200

P21/5W VisionPlus



Ordering number	V	W	Base	GOC	EAN1	ECE	EAN3	Packing quantity
12499VPB2	12	21/5	BAY15d	36316630	8 727900 363166	E1 2CR	8727900363159	10

P21/5W LongLife EcoVision



Ordering number	V	W	Base	GOC	EAN1	ECE	EAN3	Packing quantity
12499LLECOB2	12	21/5	BAY15d	38212930	8 727900 382129	E1 2CR	8727900382136	10
12499LLECOCP	12	21/5	BAY15d	38201373	8 727900 382013	E1 2CR	8727900382037	200

P21/5W



Ordering number	V	W	Base	GOC	EAN1	ECE	EAN3	Packing quantity
12499B2	12	21/5	BAY15d	5545330	8 711500 055453	E1 2CR	8711559520148	10
12499CP	12	21/5	BAY15d	48159773	8 711500 481597	E1 2CR	8711500481610	200

PR21/5W



Ordering number	V	W	Base	GOC	EAN1	ECE	EAN3	Packing quantity
12495CP	12	21/5	BAW15d	48873273	8 711500 488732	E4 2MC	8711500488756	200

PY21W SilverVision



Ordering number	V	W	Base	GOC	EAN1	ECE	EAN3	Packing quantity
12496SVS2	12	21	BAU15s	47982230	8 711500 479822	E2 2F7	8711500479839	10
12496SVB2	12	21	BAU15s	31117730	8 711500 311177	E2 2F7	8711500311191	10

PY21W LongLife EcoVision



Ordering number	V	W	Base	GOC	EAN1	ECE	EAN3	Packing quantity
12496LLECOCP	12	21	BAU15s	38218173	8 727900 382181	-	8727900382204	200

PY21W



Ordering number	V	W	Base	GOC	EAN1	ECE	EAN3	Packing quantity
12496NAB2	12	21	BAU15s	52372930	8 711559 523729	E2 2F7	8711559523743	10
12496NACP	12	21	BAU15s	52534173	8 711559 525341	E2 2F7	8711559525365	200

PR21W



Ordering number	V	W	Base	GOC	EAN1	ECE	EAN3	Packing quantity
12088CP	12	21	BAW15s	48531173	8 711500 485311	E4 2LV	8711500485762	200

Stop lights

Stop P22



Ordering number	V	W	Base	GOC	EAN1	ECE	EAN3	Packing quantity
12401CP	12	15	BA15s	87821273	8 711500 878212	-	8711500878236	200

Stop P25



Ordering number	V	W	Base	GOC	EAN1	ECE	EAN3	Packing quantity
12445CP	12	18	BA15s	48440673	8 711500 484406	-	8711500484420	200

Rear parking lights

R5W LongLife EcoVision



Ordering number	V	W	Base	GOC	EAN1	ECE	EAN3	Packing quantity
12821LLECOB2	12	5	BA15s	38208230	8 727900 382082	E1 2AY	8727900382099	10
12821LLECOCP	12	5	BA15s	38195573	8 727900 381955	E1 2AY	8727900381979	200

R5W BA15s



Ordering number	V	W	Base	GOC	EAN1	ECE	EAN3	Packing quantity
12821B2	12	5	BA15s	5546030	8 711500 055460	E1 2AY	8711500417701	10

R5W BA15s



Ordering number	V	W	Base	GOC	EAN1	ECE	EAN3	Packing quantity
12821CP	12	5	BA15s	48269373	8 711500 482693	E1 2AY	8711500482716	200

R5W BA15d



Ordering number	V	W	Base	GOC	EAN1	ECE	EAN3	Packing quantity
12822CP	12	5	BA15d	45407273	8 711500 454072	-	8711500408976	200

R10W



Ordering number	V	W	Base	GOC	EAN1	ECE	EAN3	Packing quantity
12814B2	12	10	BA15s	5547730	8 711500 055477	E1 2BF	8711500417718	10
12814CP	12	10	BA15s	48341673	8 711500 483416	E1 2BF	8711500483430	200

RY10W



Ordering number	V	W	Base	GOC	EAN1	ECE	EAN3	Packing quantity
12093NACP	12	10	BAU15s	48362173	8 711500 483621	E1 2KX	8711500483645	200

W1,2W - W2,3W - W2W - WBT5



Ordering number	V	W	Base	GOC	EAN1	ECE	EAN3	Packing quantity
12061CP	12	2.3	W2x4,6d	48330073	8 711500 483300	E1 2B	8711500483324	200
12505CP	12	2	W2x4,6d	48327073	8 711500 483270	-	8711500483294	200
12516B2	12	1.2	W2x4,6d	5554530	8 711500 055545	-	8711500417763	10
12516CP	12	1.2	W2x4,6d	48153573	8 711500 481535	-	8711500481559	200
12521CP	12	1	W2x4,6d	48321873	8 711500 483218	-	8711500483232	200

W2,2W - W3W



Ordering number	V	W	Base	GOC	EAN1	ECE	EAN3	Packing quantity
12256B2	12	3	W2,1x9,5d	52410830	8 711559 524108	E1 2CD	8711559524122	10
12256CP	12	3	W2,1x9,5d	48144373	8 711500 481443	E1 2CD	8711500481467	200
12960CP	12	2.2	W2,1x9,5d	48150473	8 711500 481504	-	8711500481528	200

W5W BlueVision ultra



Ordering number	V	W	Base	GOC	EAN1	ECE	EAN3	Packing quantity
12961BVB2	12	5	W2,1x9,5d	31029330	8 711500 310293	E1 2CA	8711559523774	10

W5W LongLife EcoVision



Ordering number	V	W	Base	GOC	EAN1	ECE	EAN3	Packing quantity
12961LLECOB2	12	5	W2,1x9,5d	38204430	8 727900 382044	E1 2CA	8727900382051	10
12961LLECOCP	12	5	W2,1x9,5d	38189473	8 727900 381894	E1 2CA	8727900381917	200

W5W



Ordering number	V	W	Base	GOC	EAN1	ECE	EAN3	Packing quantity
12961B2	12	5	W2,1x9,5d	40421330	8 711500 404213	E1 2CA	8711559520070	10
12961CP	12	5	W2,1x9,5d	49090273	8 711500 490902	E1 2CA	8711500490926	200

WY5W



Ordering number	V	W	Base	GOC	EAN1	ECE	EAN3	Packing quantity
12396NAB2	12	5	W2,1x9,5d	40058130	8 711500 400581	E4 2EA	8711500400598	10
12396NACP	12	5	W2,1x9,5d	53002473	8 711559 530024	E4 2EA	8711559530048	200

WBT10



Ordering number	V	W	Base	GOC	EAN1	ECE	EAN3	Packing quantity
12040VPB2	12	6	W2,1x9,5d	52416030	8 711559 524160	-	8711559524184	10

W16W



Ordering number	V	W	Base	GOC	EAN1	ECE	EAN3	Packing quantity
12067B2	12	16	W2,1x9,5d	40587630	8 711500 405876	E2 2JO	8711559521053	10
12067CP	12	16	W2,1x9,5d	48272373	8 711500 482723	E2 2JO	8711500482747	200

W21W



Ordering number	V	W	Base	GOC	EAN1	ECE	EAN3	Packing quantity
12065B2	12	21	W3x16d	70146330	8 727900 701463	E4 2DT	8727900701470	10
12065CP	12	21	W3x16d	47135273	8 711500 471352	E4 2DT	8711500471376	200

W21/5W



Ordering number	V	W	Base	GOC	EAN1	ECE	EAN3	Packing quantity
12066B2	12	21/5	W3x16q	69739130	8 727900 697391	E4 2DU	8727900697407	10
12066B2	12	21/5	W3x16q	69739130	8 711500 471383	E4 2DU	8727900697407	10

WY21W



Ordering number	V	W	Base	GOC	EAN1	ECE	EAN3	Packing quantity
12071B2	12	21	WX3x16d	69741430	8 727900 697414	E4 2LU	8727900697421	10
12071CP	12	21	WX3x16d	52539673	8 711559 525396	E4 2LU	8711559525419	200

Festoon

Festoon T6,2x27



Ordering number	V	W	Base	GOC	EAN1	ECE	EAN3	Packing quantity
12818CP	12	3	SV6	48461173	8 711500 484611	-	8711500484635	200
12848CP	12	3	SV6	48467373	8 711500 484673	-	8711500484697	200

C5W



Ordering number	V	W	Base	GOC	EAN1	ECE	EAN3	Packing quantity
12844B2	12	5	SV8,5	5551430	8 711500 055514	E1 2BL	8711500417749	10
12844CP	12	5	SV8,5	48156673	8 711500 481566	E1 2BL	8711500481580	200

Festoon T10,5x30 LongLife EcoVision



Ordering number	V	W	Base	GOC	EAN1	ECE	EAN3	Packing quantity
12860LLECOCP	12	10	SV8,5	38192473	8 727900 381924	-	8727900381948	200

Festoon T10,5x38



Ordering number	V	W	Base	GOC	EAN1	ECE	EAN3	Packing quantity
12854CP	12	10	SV8,5	48248873	8 711500 482488	-	8711500482501	200

Festoon T10,5x43



Ordering number	V	W	Base	GOC	EAN1	ECE	EAN3	Packing quantity
12864CP	12	5	SV8,5	48205173	8 711500 482051	-	8711500482327	200
12866B2	12	10	SV8,5	5552130	8 711500 055521	-	8711500417756	10
12866CP	12	10	SV8,5	48242673	8 711500 482426	-	8711500482440	200

Festoon T15x43



Ordering number	V	W	Base	GOC	EAN1	ECE	EAN3	Packing quantity
12850CP	12	15	SV8,5	48285373	8 711500 482853	-	8711500482877	200

Auxiliary lamps

T2W



Ordering number	V	W	Base	GOC	EAN1	ECE	EAN3	Packing quantity
12913CP	12	2	BA9s	21997873	8 711500 219978	-	8711500219992	200

T3W



Ordering number	V	W	Base	GOC	EAN1	ECE	EAN3	Packing quantity
12910CP	12	3	BA9s	2194973	8 711500 219497	-	8711500219510	200

T4W BlueVision ultra



Ordering number	V	W	Base	GOC	EAN1	ECE	EAN3	Packing quantity
12929BVB2	12	4	BA9s	31031630	8 711500 310316	E1 2BU	8711500310392	10

T4W



Ordering number	V	W	Base	GOC	EAN1	ECE	EAN3	Packing quantity
12929B2	12	4	BA9s	5550730	8 711500 055507	E1 2BU	8711559520094	10
12929CP	12	4	BA9s	21979473	8 711500 219794	E1 2BU	8711500219817	200

H6W BlueVision ultra



Ordering number	V	W	Base	GOC	EAN1	ECE	EAN3	Packing quantity
12036BVB2	12	6	BAX9s	24567030	8 711500 245670	E1 2GK	8711500245687	10
12036BVCP	12	6	BAX9s	87609673	8 711500 876096	E1 2GK	8711500876119	200

H6W



Ordering number	V	W	Base	GOC	EAN1	ECE	EAN3	Packing quantity
12036B2	12	6	BAX9s	24720930	8 711500 247209	E1 2GK	8711500247216	10
12036CP	12	6	BAX9s	87603473	8 711500 876034	E1 2GK	8711500876058	200

Bax

Bax tool box 12V

Ordering number	V	W	Base	GOC	EAN1	ECE	EAN3	Packing quantity
55502GKKM	12	-	-	69717928	8 727900 697179	-	8727900697230	5

Bax 8,3s/1,35 black



Ordering number	V	W	Base	GOC	EAN1	ECE	EAN3	Packing quantity
12597B2	12	1.2	Bax 8,3s/1,35 black	53018530	8 711559 530185	-	8711559530192	10
12597CP	12	1.2	Bax 8,3s/1,35 black	48365273	8 711500 483652	-	8711500483676	200

Bax 8,3s/1,5 blue



Ordering number	V	W	Base	GOC	EAN1	ECE	EAN3	Packing quantity
12602CP	12	2	Bax 8,3s/1,5 blue	48396673	8 711500 483966	-	8711500483980	200

Bax 8,5d/2 black



Ordering number	V	W	Base	GOC	EAN1	ECE	EAN3	Packing quantity
12598B2	12	1.2	Bax 8,5d/2 black	40588330	8 711500 405883	-	8711500405890	10

Bax 8,5d/2 black



Ordering number	V	W	Base	GOC	EAN1	ECE	EAN3	Packing quantity
12598CP	12	1.2	Bax 8,5d/2 black	48387473	8 711500 483874	-	8711500483898	200

Bax 8,5d/1,5 blue



Ordering number	V	W	Base	GOC	EAN1	ECE	EAN3	Packing quantity
12603CP	12	1.2	Bax 8,5d/1,5 blue	48399773	8 711500 483997	-	8711500484017	200

Bax 8,5d/2 green



Ordering number	V	W	Base	GOC	EAN1	ECE	EAN3	Packing quantity
12600CP	12	2	Bax 8,5d/2 y-green	48393573	8 711500 483935	-	8711500483959	200

Bax 8,5d beige



Ordering number	V	W	Base	GOC	EAN1	ECE	EAN3	Packing quantity
12637CP	12	1.5	Bax 8,5d beige	51487173	8 711559 514871	-	8711559512471	200

Bax 10d black halogen



Ordering number	V	W	Base	GOC	EAN1	ECE	EAN3	Packing quantity
12615CP	12	5	Bax 10d black	52807673	8 711559 528076	-	8711500244147	200

Bax 10d brown halogen



Ordering number	V	W	Base	GOC	EAN1	ECE	EAN3	Packing quantity
12614CP	12	3	Bax 10d brown	52805273	8 711559 528052	-	8711559513409	200

Bax 8,4d light blue



Ordering number	V	W	Base	GOC	EAN1	ECE	EAN3	Packing quantity
12623CP	12	1.2	Bax 8,4d light blue	51384373	8 711559 513843	-	8711500244413	200

Bax 8,4d beige



Ordering number	V	W	Base	GOC	EAN1	ECE	EAN3	Packing quantity
12627CP	12	1.5	Bax 8,4d beige	51414773	8 711559 514147	-	8711500400093	200
12629CP	12	1.8	Bax 8,4d beige	51488873	8 711559 514888	-	8711559512716	200

Bax 8,4d black



Ordering number	V	W	Base	GOC	EAN1	ECE	EAN3	Packing quantity
12625CP	12	1.2	Bax 8,4d black	51409373	8 711559 514093	-	8711500244444	200

Bax 8,4d light green

Ordering number	V	W	Base	GOC	EAN1	ECE	EAN3	Packing quantity
12626CP	12	2	Bax 8,4d light green	51412373	8 711559 514123	-	8711500246073	200

Bax 8,4d olive green

Ordering number	V	W	Base	GOC	EAN1	ECE	EAN3	Packing quantity
12628CP	12	1.3	Bax 8,4d olive green	77432373	8 711500 774323	-	8711500774347	200

Bax 8,4d orange

Ordering number	V	W	Base	GOC	EAN1	ECE	EAN3	Packing quantity
12624CP	12	1.1	Bax 8,4d orange	51411673	8 711559 514116	-	8711500245144	200

Bax 8,5d white

Ordering number	V	W	Base	GOC	EAN1	ECE	EAN3	Packing quantity
12638CP	12	1.12	Bax 8,5d white	48846673	8 711500 488466	-	8711500488480	200

Miniature halogen signaling USA

H6W

Ordering number	V	W	Base	GOC	EAN1	ECE	EAN3	Packing quantity
12023CP	12	5	BA9s	51270973	8 711559 512709	-	8711559514864	20
12024CP	12	10	BA9s	52941773	8 711559 529417	-	8711559529844	200
12025CP	12	20	BA9s	87600373	8 711500 876003	-	8711500876027	20

H21W

Ordering number	V	W	Base	GOC	EAN1	ECE	EAN3	Packing quantity
12356CP	12	21	BAY9s	87989973	8 711500 879899	E1 2GW	8711500879912	200

HY21W

Ordering number	V	W	Base	GOC	EAN1	ECE	EAN3	Packing quantity
12146CP	12	21	BAW9s	35244373	8 727900 352443	-	8727900352467	200

H27W/1

Ordering number	V	W	Base	GOC	EAN1	ECE	EAN3	Packing quantity
12059C1	12	27	PG13	52854073	8 711559 528540	E1 24A	8711559528564	200

H27W/2

Ordering number	V	W	Base	GOC	EAN1	ECE	EAN3	Packing quantity
12060C1	12	27	PGJ13	52857173	8 711559 528571	E1 24A	8711559528595	200

HiPerVision

PCY16W

Ordering number	V	W	Base	GOC	EAN1	ECE	EAN3	Packing quantity
12271AC1	13.5	16	PU20d/2	38965433	8 727900 389654	-	8727900389661	100

P13W

Ordering number	V	W	Base	GOC	EAN1	ECE	EAN3	Packing quantity
12277C1	12	13	PG18,5d-1	69672133	8 727900 696721	E4 2MM	8727900699388	15

PS19W LongLife

Ordering number	V	W	Base	GOC	EAN1	ECE	EAN3	Packing quantity
12085LLC1	12	19	PG20/1	70046633	8 727900 700466	E4 2HZ	8727900700473	15

PSY19W

Ordering number	V	W	Base	GOC	EAN1	ECE	EAN3	Packing quantity
12275NAC1	12	19	PG20/2	52735233	8 711559 527352	E4 2ME	8727900699364	15

PS24W

Ordering number	V	W	Base	GOC	EAN1	ECE	EAN3	Packing quantity
12086FFC1	12	24	PG20/3	70044233	8 727900 700442	-	8727900700459	15

PSX24W

Ordering number	V	W	Base	GOC	EAN1	ECE	EAN3	Packing quantity
12276C1	12	24	PG20/7	69676933	8 727900 696769	E4 2MK	8727900699395	15

PY24W

Ordering number	V	W	Base	GOC	EAN1	ECE	EAN3	Packing quantity
12190NAC1	12	24	PGU20/4	69690533	8 727900 696905	E4 2LW	8727900699357	15

PY24W SilverVision

Ordering number	V	W	Base	GOC	EAN1	ECE	EAN3	Packing quantity
12274SV+C1	12	24	PGU20/4	69678333	8 727900 696783	E4 2LW	8727900699371	15

PSY24W

Ordering number	V	W	Base	GOC	EAN1	ECE	EAN3	Packing quantity
12188NAC1	12	24	PG20/4	69668433	8 727900 696684	E4 2MH	8727900699340	15

PY24 SilverVision

Ordering number	V	W	Base	GOC	EAN1	ECE	EAN3	Packing quantity
12180SV+C1	12	24	PG20/4	70379533	8 727900 703795	E4 2MH	8727900703801	15

PSX26W

Ordering number	V	W	Base	GOC	EAN1	ECE	EAN3	Packing quantity
12278C1	12	26	PG18,5d-3	38874933	8 727900 388749	E4 2SF	8727900388756	15

European spare kit regulations



12V Spare kit essentials

For increased safety, it is recommended by most European countries that all vehicles should be equipped with a homologated spare kit.

Compulsory in some European countries and recommended by most, having a homologated spare kit in a vehicle will not only keep drivers in compliance with the law but will also keep them safer as they will always be prepared to replace a burned-out lamp.

Easy kit H1

Ordering number	V	W	Base	GOC	EAN1	ECE	EAN3	Packing quantity
55472EKKM	12	-	-	69551928	8 727900 695519	-	8727900695533	5

Content

Lamp type	H1	H4	H7	R2	P21W	P21/5W	PY21W	W5W	Fuse 10A
Quantity	•	-	-	-	•	•	1	1	1

Easy kit H4

Ordering number	V	W	Base	GOC	EAN1	ECE	EAN3	Packing quantity
55473EKKM	12	-	-	69555728	8 727900 695557	-	8727900695571	5

Content

Lamp type	H1	H4	H7	R2	P21W	P21/5W	PY21W	W5W	Fuse 10A
Quantity	-	1	-	-	1	1	1	1	1

Easy kit H7

Ordering number	V	W	Base	GOC	EAN1	ECE	EAN3	Packing quantity
55474EKKM	12	-	-	69558828	8 727900 695588	-	8727900695601	5

Content

Lamp type	H1	H4	H7	R2	P21W	P21/5W	PY21W	W5W	Fuse 10A
Quantity	-	-	1	-	1	1	1	1	1

Easy kit H1/H7

Ordering number	V	W	Base	GOC	EAN1	ECE	EAN3	Packing quantity
55475EKKM	12	-	-	69562528	8 727900 695625	-	8727900695656	5

Content

Lamp type	H1	H4	H7	R2	P21W	P21/5W	PY21W	W5W	Fuse 10A
Quantity	1	-	1	-	1	1	1	1	1

Easy kit R2

Ordering number	V	W	Base	GOC	EAN1	ECE	EAN3	Packing quantity
55476EKKM	12	-	-	69566328	8 727900 695663	-	8727900695687	5

Content

Lamp type	H1	H4	H7	R2	P21W	P21/5W	PY21W	W5W	Fuse 10A
Quantity	-	-	-	1	1	1	1	1	1

Single kit H1

Ordering number	V	W	Base	GOC	EAN1	ECE	EAN3	Packing quantity
55005SKKM	12	-	-	52730730	8 711559 527307	0	8711559527246	10

Content

Lamp type	H1	H4	H7	P21W	P21/5W	PY21W	W5W	R5W	R10W	C5W	T4W	Fest.T10,5x43	Fuse 10A	Fuse 15A	Fuse 20A	Fuse 30A
Quantity	1	-	-	1	1	-	-	1	-	1	1	-	-	1	1	1

Single kit H4

Ordering number	V	W	Base	GOC	EAN1	ECE	EAN3	Packing quantity
55007SKKM	12	-	-	52732130	8 711559 527321	-	8711559527215	10

Content

Lamp type	H1	H4	H7	P21W	P21/5W	PY21W	W5W	R5W	R10W	C5W	T4W	Fest.T10,5x43	Fuse 10A	Fuse 15A	Fuse 20A	Fuse 30A
Quantity	-	1	-	1	1	-	-	1	-	1	1	-	-	1	1	1

Single kit H7

Ordering number	V	W	Base	GOC	EAN1	ECE	EAN3	Packing quantity
55008SKKM	12	-	-	52731430	8 711559 527314	-	8711559527222	10

Content

Lamp type	H1	H4	H7	P21W	P21/5W	PY21W	W5W	R5W	R10W	C5W	T4W	Fest.T10,5x43	Fuse 10A	Fuse 15A	Fuse 20A	Fuse 30A
Quantity	-	-	1	1	1	-	-	1	-	1	1	-	-	1	1	1

Single kit H1/H7

Ordering number	V	W	Base	GOC	EAN1	ECE	EAN3	Packing quantity
55010SKKM	12	-	-	30999030	8 711500 309990	-	8711500310163	10

Content

Lamp type	H1	H4	H7	P21W	P21/5W	PY21W	W5W	R5W	R10W	C5W	T4W	Fest.T10,5x43	Fuse 10A	Fuse 15A	Fuse 20A	Fuse 30A
Quantity	1	-	1	1	-	1	1	-	1	1	1	1	1	-	1	1

Essential box H1

Ordering number	V	W	Base	GOC	EAN1	ECE	EAN3	Packing quantity
55717EBKM	12	-	-	70032928	8 727900 700329	-	8727900700336	5

Content

Lamp type	H1	H4	H7	R2	P21W	P21/5W	PY21W	W5W	Fuse 10A	Fuse 15A	Fuse 20A
Quantity	1	-	-	-	1	1	1	1	1	1	1

Essential box H4

Ordering number	V	W	Base	GOC	EAN1	ECE	EAN3	Packing quantity
55718EBKM	12	-	-	70034328	8 727900 700343	-	8727900700350	5

Content

Lamp type	H1	H4	H7	R2	P21W	P21/5W	PY21W	W5W	Fuse 10A	Fuse 15A	Fuse 20A
Quantity	-	1	-	-	1	1	1	1	1	1	1

Essential box H7

Ordering number	V	W	Base	GOC	EAN1	ECE	EAN3	Packing quantity
55719EBKM	12	-	-	70036728	8 727900 700367	-	8727900700374	5

Content

Lamp type	H1	H4	H7	R2	P21W	P21/5W	PY21W	W5W	Fuse 10A	Fuse 15A	Fuse 20A
Quantity	-	-	1	-	1	1	1	1	1	1	1

Essential box H1/H7

Ordering number	V	W	Base	GOC	EAN1	ECE	EAN3	Packing quantity
55720EBKM	12	-	-	70038128	8 727900 700381	-	8727900700398	50

Content

Lamp type	H1	H4	H7	R2	P21W	P21/5W	PY21W	W5W	Fuse 10A	Fuse 15A	Fuse 20A
Quantity	1	-	1	-	1	1	1	1	1	1	1

Essential box R2

Ordering number	V	W	Base	GOC	EAN1	ECE	EAN3	Packing quantity
55721EBKM	12	-	-	70040428	8 727900 700404	-	8727900700411	5

Content

Lamp type	H1	H4	H7	R2	P21W	P21/5W	R5W	W5W	Fuse 10A	Fuse 15A	Fuse 20A
Quantity	1	-	-	-	1	1	1	1	1	1	1



LED interior lighting for cars and trucks

Philips LED interior lighting illuminates the vehicle's interior with power and precision.

The Philips X-tremeVision LED range provides light where it is needed the most, without distracting the driver. Choose a range of temperatures from 4 000 K to up to 6 700 K, from powerful, warm white to ultimate blue light for maximum perception and styling.

The Philips X-tremeVision LED range produces up to 5 times more light while using 13 times less energy.* Its power, economy and 12-year lifetime are simply incomparable. This is especially important for truck drivers and fleet owners.

*Compared to a standard interior lighting solution.

Which LED interior lighting do you need?



Drive with style

5x more light

X-tremeVision LED

Standard lamp

X-tremeVision LED 6 700 K

Extra bright

12

Vibration resistant

★★★★★ Overall performance

Available in Festoon 14x30, Festoon 10,5x38, Festoon 10,5x43, Wedge base (T10)



Visit our LED interior lighting web page

12V/24V LED interior lighting

X-tremeVision LED

- Up to 5x more light*
- 4 000 - 6 700 K color temperature
- High-performance LED
- Perfect geometrical fit
- Heat and vibration resistant
- 12-year lifetime

Producing 5x more light than standard incandescent lamps, the Philips 12V and 24V X-tremeVision LED ranges are equipped with high-power LEDs that illuminate the interior with a cool, bright and precise light while not distracting the driver.

They are available from 4 000 K temperature up to 6 700 K (depending on the lamp you choose).

- Powerful X-tremeVision 4 000 K *Bright white* is a perfect and economical replacement for a standard incandescent interior lamp.
- The X-tremeVision LED 6 000 K *Daylight effect* illuminates the interior with power where it's needed most.
- Philips X-tremeVision LED 6 700 K *Xenon blue* offers a unique stylish blue xenon effect for drivers seeking more style and the power of daylight.

Because of its 12-year lifetime and exceptional heat and vibration resistance, it is the perfect choice for 24V interior lighting (trucks, buses and heavy-duty vehicles) and for those seeking an economical solution for the entire fleet.

Offering a perfect geometrical fit, the Philips X-tremeVision LED interior lighting solution is the ideal replacement for any vehicle.

*Compared to standard incandescent lighting

Bright white 4 000 K



Standard



X-tremeVision LED 4 000 K



Available in



Festoon 14x30



Festoon 10,5x38



Festoon 10,5x43



Wedge base

Daylight effect 6 000 K



Standard



X-tremeVision LED 6 000 K



Available in



Festoon 14x30



Festoon 10,5x38



Festoon 10,5x43



Wedge base

Xenon blue 6 700 K



Standard



X-tremeVision LED 6 700 K



Available in



Wedge base

12V LED Interior lamps

Festoon 14x30 X-tremeVision LED 4 000 K



Ordering number	V	W	Base	GOC	EAN1	ECE	EAN3	Packing quantity
129404000KX1	12	1	SV8,5	38724730	8 727900 387247	-	8727900387254	10

Festoon 10,5x38 X-tremeVision LED 4 000 K



Ordering number	V	W	Base	GOC	EAN1	ECE	EAN3	Packing quantity
128584000KX1	12	1	SV8,5	70340530	8 727900 703412	-	8727900703405	10

Festoon 10,5x43 X-tremeVision LED 4 000 K



Ordering number	V	W	Base	GOC	EAN1	ECE	EAN3	Packing quantity
129454000KX1	12	1	SV8,5	38343030	8 727900 383430	-	8727900383447	10

Festoon 14x30 X-tremeVision LED 6 000 K



Ordering number	V	W	Base	GOC	EAN1	ECE	EAN3	Packing quantity
129416000KX1	12	1	SV8,5	38722330	8 727900 387223	-	8727900387230	10

Festoon 10,5x38 X-tremeVision LED 6 000 K



Ordering number	V	W	Base	GOC	EAN1	ECE	EAN3	Packing quantity
128596000KX1	12	1	SV8,5	70338230	8 727900 703399	-	8727900703382	10

Festoon 10,5x43 X-tremeVision LED 6 000 K



Ordering number	V	W	Base	GOC	EAN1	ECE	EAN3	Packing quantity
129466000KX1	12	1	SV8,5	38341630	8 727900 383416	-	8727900383423	10

Wedge base X-tremeVision LED 4 000 K



Ordering number	V	W	Base	GOC	EAN1	ECE	EAN3	Packing quantity
129644000KX2	12	1	W2.1X9.5D	70347430	8 727900 703474	-	8727900703467	10

Wedge base X-tremeVision LED 6 000 K



Ordering number	V	W	Base	GOC	EAN1	ECE	EAN3	Packing quantity
129666000KX2	12	1	W2.1X9.5D	70344330	8 727900 703450	-	8727900703443	10

Wedge base X-tremeVision LED 6 700 K



Ordering number	V	W	Base	GOC	EAN1	ECE	EAN3	Packing quantity
129326700KX2	12	1	W2.1X9.5D	70345030	8 727900 386929	-	8727900386936	10

CANbus control unit for 12V LED lamps

Ordering number	V	W	Base	GOC	EAN1	ECE	EAN3	Packing quantity
12956X2	12	5	-	38345430		-	8727900383461	10

24V LED Interior lamps

Wedge base X-tremeVision LED 4 000 K



Ordering number	V	W	Base	GOC	EAN1	ECE	EAN3	Packing quantity
249304000KX2	24	1	W2.1X9.5D	38726130		-	8727900387278	10

Wedge base X-tremeVision LED 6 000 K



Ordering number	V	W	Base	GOC	EAN1	ECE	EAN3	Packing quantity
249316000KX2	24	1	W2.1X9.5D	38337930		-	8727900383386	10



LED Daytime Running Lights



LED Daytime Running Light solutions

LED interior lighting sales and marketing tools

Take advantage of our new specimen packaging that you may use in your store, shop or gas station to avoid theft and save money.



On-shelf presentation specimen packaging					
Description	Ordering number	GOC	EAN1	EAN3	MOQ*
Specimen Wedge base (T10) LED LFT10 4000K SF	LFT104000KSF	39966030	8727900399660	8727900399677	10
Specimen Wedge base (T10) LED LFT10 6000K SF	LFT106000KSF	39968430	8727900399684	8727900399691	10
Specimen Fest LED LFF01 4000K SF	LFF014000KSF	39970730	8727900399707	8727900399714	10
Specimen Fest LED LFF01 6000K SF	LFF016000KSF	39972130	8727900399721	8727900399738	10

*MOQ: Minimum Ordering Quantity

Discover our range of LED Daytime Running Light solutions, designed to improve driver safety by increasing vehicle visibility during the day. Easy to install, Philips OE Quality LED Daytime Running Light range is equipped with the latest high-power LUXEON® LEDs. To enhance vehicle visibility in any traffic situation and in all weather conditions, check out the ultra-powerful Philips LED DayLightGuide. Its revolutionary lens and innovative lightguide technology offer an exclusive design signature without dots and boasts wide-angle visibility.

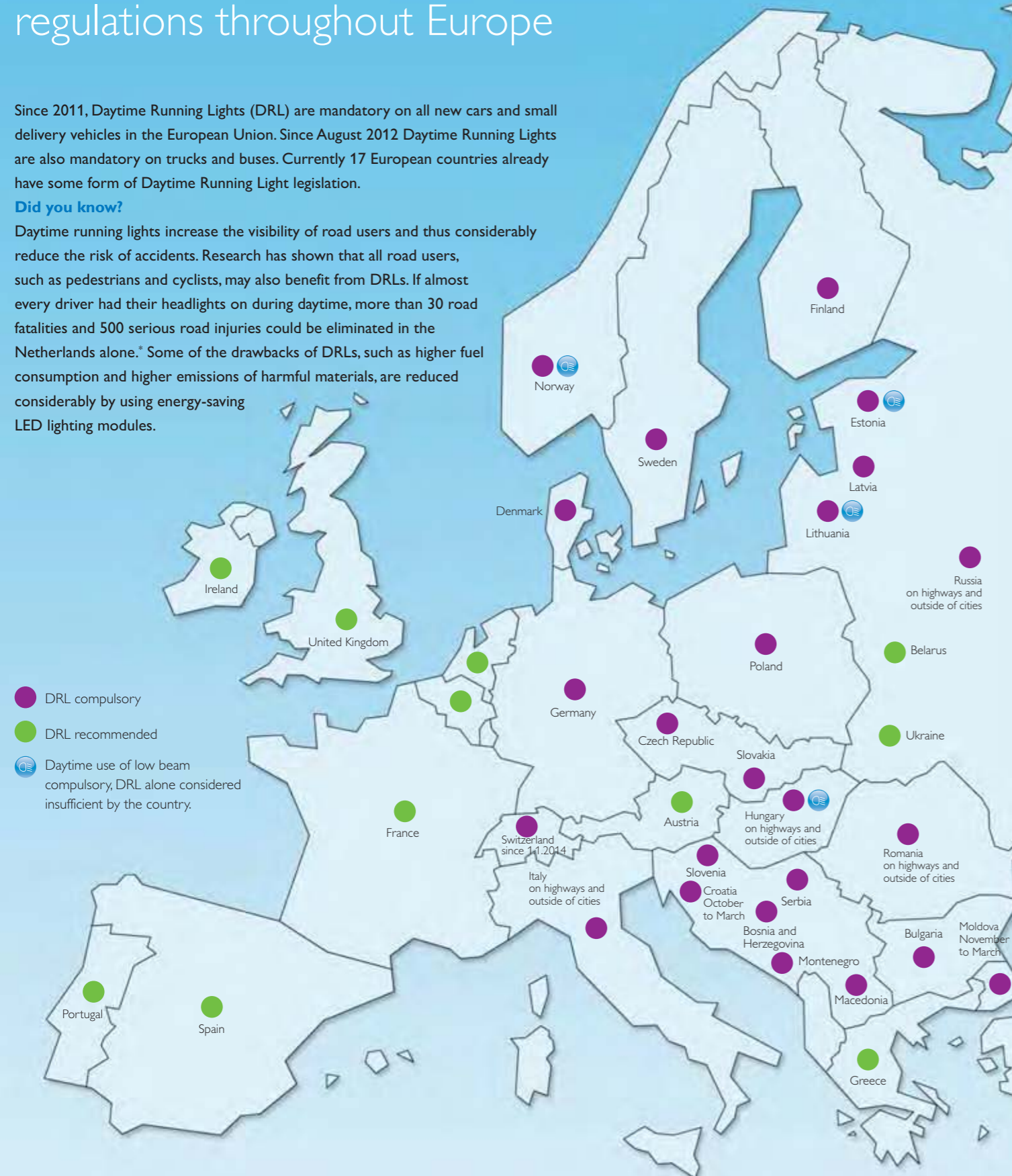
For maximum simplicity and ease of integration, we offer the stylish and compact LED DayLight 4. Philips LED Daytime Running Lights, a must for greater safety and style, are just a *simple click* away!

LED Daytime Running Lights regulations throughout Europe

Since 2011, Daytime Running Lights (DRL) are mandatory on all new cars and small delivery vehicles in the European Union. Since August 2012 Daytime Running Lights are also mandatory on trucks and buses. Currently 17 European countries already have some form of Daytime Running Light legislation.

Did you know?

Daytime running lights increase the visibility of road users and thus considerably reduce the risk of accidents. Research has shown that all road users, such as pedestrians and cyclists, may also benefit from DRLs. If almost every driver had their headlights on during daytime, more than 30 road fatalities and 500 serious road injuries could be eliminated in the Netherlands alone.* Some of the drawbacks of DRLs, such as higher fuel consumption and higher emissions of harmful materials, are reduced considerably by using energy-saving LED lighting modules.



Legislation information source © TCS Conseils mobilité, Emmen | Doctech: 3394.04.fr/FGR | 31.05.2013
 *Source: © SWOV, Leidschendam, the Netherlands, December 2010

Which LED Daytime Running Light solution do you need?

Safety

High visibility for maximum safety



LED DayLight 4




Low-beam
LED DayLight 4






Carpark compatibility
★★★★★

Ease of installation
★★★★★

Safety & style

Exclusive design signature, maximum visibility



LED DaylightGuide




Low-beam
LED DaylightGuide






Carpark compatibility
★★★★☆

Ease of installation
★★★★★



Visit our LED Daytime running Lights web page

Safety

LED DayLight 4 High visibility for maximum safety

- High-power LUXEON® LEDs for more visibility and greater safety
- Ultra-compact design, compatible with most car models
- Compatible with hybrid, electric, and Stop & Start models
- *Simple-click* installation
- Automatic switch-on
- Homologated ECE R87

*Compared to standard homologated light output



Offering high visibility for maximum safety, Philips LED DayLight 4 is the ultra-compact and ultra-powerful daytime running light solution for everyone. High-power LUXEON® LEDs provide bright light that makes vehicles stand out and be seen by other drivers for greater safety on the road. Offering a *simple-click* installation, automatic switch-on, and an ultra-compact design, it is compatible with most European car models including hybrid, electric, and Stop & Start models.



LED DayLight 4 dimensions: W125 x H24 x D31 mm

Safety and style

LED DayLightGuide Exclusive design signature Maximum visibility

- New generation high-power LUXEON® LEDs for more visibility and greater safety
- Exclusive design signature
- Homologated Lightguide technology
- for uniform diffusion and ultra-wide light beam
- Water and gravel-impact resistant
- Stays on day and night (automatically dims)
- Homologated ECE R87



Discover the LED DayLightGuide with its ultra-slim and exclusive design signature equipped with new generation high-power LUXEON® LEDs that remain lit day and night (dimmed). The homologated Lightguide technology results in a uniform diffusion of light without dots and an ultra-wide beam. Its high-quality aluminum housing is water and gravel-impact resistant and does not require any maintenance. Install it in a *simple-click*!



LED DayLightGuide dimensions: W165 x H22 x D35 mm



LED Daytime Running Lights

LED DayLight 4

Ordering number	V	W	Base	GOC	EAN1	ECE	EAN3	Packing quantity
12831ACCX1	12	6	Click 2	38906745	8 727900 389067	ECE R87	8727900389100	3

LED DayLightGuide

Ordering number	V	W	Base	GOC	EAN1	ECE	EAN3	Packing quantity
12825WLEDX1	12	6	Click 2	38638733	8 727900 386387	ECE R87	8727900386394	2



Safety and durability

MasterLife Outperforms everything on the road

- Lasts up to 4x longer*
- Maximum vibration resistance 2x*
- Extra robust double-coil filament
- High-performance quartz glass
- Original Equipment quality (OE)

*Compared to average H4 or H7 product on the market



The new generation of MasterLife lasts up to 4x longer while withstanding extreme stress and vibration. MasterLife offers the best lifetime on the market, **lasting 4x longer*** than the average headlamp by using a new, unique gas composition, together with the geometrical properties of the double-coil filament, designed to reduce tungsten evaporation. It features the vibration resistance of MasterDuty for maximum strength and durability.

MasterLife headlamps outperform the competition by far! It is the ultimate **Original Equipment quality** truck lighting solution with **maximum performance** and **minimum downtime**.



Maximum lifetime on the market

With a minimum failure rate they keep a fleet productive and on the move by minimizing time-consuming interruptions. **MasterLife is the smartest choice for large fleet owners!**



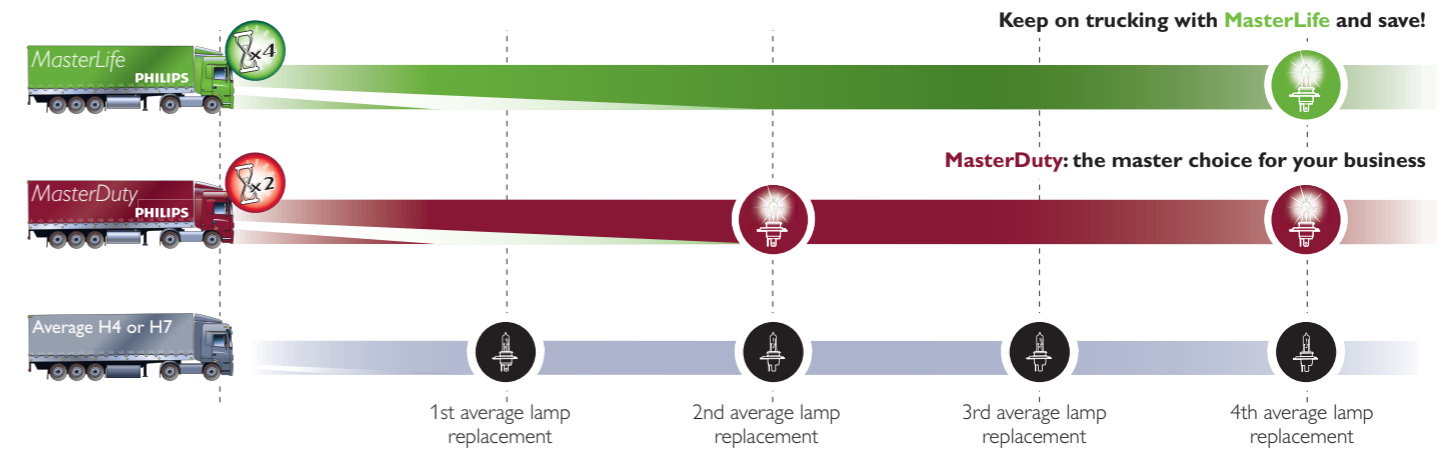
24V Bus and Truck lighting

Our new 24V Bus and Truck range outperforms all the competition! For maximum safety, comfort and savings, discover our new 24V MasterDuty and MasterLife, now offering ultimate lifetime and improved vibration resistance. These **Original Equipment quality** lighting solutions offer maximum performance and minimum downtime. Our lamps keep a fleet productive and on the move by minimizing time-consuming interruptions. We are committed to developing the most powerful and robust 24V lighting solutions on the market in order to meet the needs of both large and small fleet owners, transportation departments and all garage professionals.



To find the type of lamp you need for your heavy-duty vehicle visit our **24V application guide**

MasterLife and MasterDuty performance chart



Durability

MasterDuty Built to last

- Lasts up to 2x longer*
- Maximum vibration resistance 2x*
- Reinforced mount and base guards against shock
- Extra robust double-coil filament
- High-performance quartz glass
- Original Equipment quality (OE)



The new MasterDuty headlamps are designed for **maximum vibration resistance** and **excellent lifetime**. These headlamps last 2x longer and have twice the vibration resistance of an average lamp on the market. MasterDuty features increased mount and base stiffness for ultimate protection against mechanical shock as well as a robust double coil filament designed to withstand severe vibration while remaining stable. MasterDuty is the right choice for drivers seeking toughness that lasts. All our 24V lamps are of **Original Equipment quality**, as they are the choice of most vehicle manufacturers worldwide.

*Compared to average H4 or H7 product on the market

Available in


 Vibration resistant


 H1


 H3


 H4


 H7


 H11



Master choice for your business

Style

MasterDuty BlueVision Maximum xenon effect

- Maximum vibration resistance 2x*
- High-performance quartz glass with xenon-effect coating
- Distinctive blue cap, looks sharp even when turned off
- Original Equipment quality (OE)

For drivers seeking **ultimate style and performance**, MasterDuty BlueVision produces a blue xenon effect. Philips MasterDuty BlueVision combines the durability and vibration resistance of MasterDuty with an additional blue xenon effect for maximum style. These lamps can resist twice the vibration of an average lamp. Not only stylish, the blue effect in the headlight combined with powerful white light on the road, offer more safety. For the most demanding jobs and the most demanding drivers, this is the lighting solution that delivers performance with **true style!**

*Compared to average H4 or H7 product on the market




Available in


 Vibration resistant


 H3


 H4


 H7

Which lamp for which function



MasterLife

MasterDuty

MasterDuty BlueVision

MasterDuty spare kits


 H4


 H4


 H4


 24V MiniKit


 24V MaxiKit

								
H1	H3	H4	H7	H11	R2	D1S/R	D2S	D2R
Low beam - high beam - additional high beam								

		
W5W	C5W	R5W
Interior lights		

		
P21W	PY21W	H21W
Front indicators		

			
R5W	R10W	P21/4W	P21/5W
Rear parking lights			

			
R5W	R10W	C5W	W5W
License plate lights			

					
W3W	W5W	C5W	R5W	R10W	T4W
Running lights					

					
H1	H2	H3	H4	H7	H11
Front fog lights					

			
W3W	W5W	WBTS	BAX
Dashboard lights			

			
W3W	W5W	R5W	T4W
Front parking lights			

			
W5W	R5W	R10W	H21W
Side indicators			

		
P21W	PY21W	H21W
Rear indicators		

		
P21W	H21W	P25
Rear fog lights		

	
P21W	H21W
Reversing light	




— Available in Standard

H1 MasterLife



Ordering number	V	W	Base	GOC	EAN1	ECE	EAN3	Packing quantity
13258MLC1	24	70	P14,5s	82569860	8 711500 825698	E1 22C	8711500825704	100

H1 MasterDuty



Ordering number	V	W	Base	GOC	EAN1	ECE	EAN3	Packing quantity
13258MDB1	24	70	P14,5s	82585830	8 711500 825858	1 22C	8711500825865	10
13258MDC1	24	70	P14,5s	82577360	8 711500 825773	E1 22C	8711500825780	100

H3 MasterLife



Ordering number	V	W	Base	GOC	EAN1	ECE	EAN3	Packing quantity
13336MLC1	24	70	PK22s	77462060	8 711500 774620	E1 21U	8711500774651	100

H3 MasterDuty BlueVision



Ordering number	V	W	Base	GOC	EAN1	ECE	EAN3	Packing quantity
13336MDBVS2	24	70	PK22s	77486628	8 711500 774866	E1 21U	8711500774897	5
13336MDBVB1	24	70	PK22s	77488030	8 711500 774880	E1 21U	8711500774910	10

H3 MasterDuty



Ordering number	V	W	Base	GOC	EAN1	ECE	EAN3	Packing quantity
13336MDB1	24	70	PK22s	77459030	8 711500 774590	E1 21U	8711500774613	10
13336MDC1	24	70	PK22s	77460660	8 711500 774606	E1 21U	8711500774637	100

H4 MasterLife



Ordering number	V	W	Base	GOC	EAN1	ECE	EAN3	Packing quantity
13342MLC1	24	75/70	P43t-38	82571160	8 711500 825711	E1 2C7	8711500825728	100

H4 MasterDuty BlueVision



Ordering number	V	W	Base	GOC	EAN1	ECE	EAN3	Packing quantity
13342MDBVS2	24	75/70	P43T	53275328	8 727900 532753	E1 2C7	8727900532760	5
13342MDBVB1	24	75/70	P43T	53281430	8 727900 532814	E1 2C7	8727900532821	10

H4 MasterDuty



Ordering number	V	W	Base	GOC	EAN1	ECE	EAN3	Packing quantity
13342MDB1	24	75/70	P43t-38	82587230	8 711500 825872	E1 2C7	8711500825889	10
13342MDC1	24	75/70	P43t-38	82579760	8 711500 825797	E1 2C7	8711500825803	100

H7 MasterLife



Ordering number	V	W	Base	GOC	EAN1	ECE	EAN3	Packing quantity
13972MLC1	24	70	PX26d	82573560	8 711500 825735	E4 2DN	8711500825742	100

H7 MasterDuty BlueVision



Ordering number	V	W	Base	GOC	EAN1	ECE	EAN3	Packing quantity
13972MDBVS2	24	70	PX26d	53277728	8 727900 532777	E4 2DN	8727900532784	5
13972MDBVB1	24	70	PX26d	53279130	8 727900 532791	E4 2DN	8727900532807	10

H7 MasterDuty



Ordering number	V	W	Base	GOC	EAN1	ECE	EAN3	Packing quantity
13972MDB1	24	70	PX26d	82589630	8 711500 825896	E4 2DN	8711500825902	10
13972MDC1	24	70	PX26d	82581060	8 711500 825810	E4 2DN	8711500825827	100

H11 MasterLife



Ordering number	V	W	Base	GOC	EAN1	ECE	EAN3	Packing quantity
24362MLC1	24	70	PGJ19-2	82575944	8 711500 825759	E1 25Z	8711500825766	50

H11 MasterDuty



Ordering number	V	W	Base	GOC	EAN1	ECE	EAN3	Packing quantity
24362MDC1	24	70	PGJ19-2	82583460	8 711500 825834	E1 25Z	8711500825841	100

R2



Ordering number	V	W	Base	GOC	EAN1	ECE	EAN3	Packing quantity
13620C1	24	55/50	P45t-41	40087160	8 711500 400871	E1 2C1	8711500414793	100

24V signaling and interior lighting

P21W MasterLife



Ordering number	V	W	Base	GOC	EAN1	ECE	EAN3	Packing quantity
13498MLCP	24	21	BA15s	69961673	8 727900 699616	E1 2CL	8727900699630	200

P21W MasterDuty



Ordering number	V	W	Base	GOC	EAN1	ECE	EAN3	Packing quantity
13498MDCP	24	21	BA15s	69949473	8 727900 699494	E1 2CL	8727900699517	200

P21W



Ordering number	V	W	Base	GOC	EAN1	ECE	EAN3	Packing quantity
13498B2	24	21	BA15s	40455830	8 711500 404558	E1 2CL	8711500405449	10
13498CP	24	21	BA15s	48415473	8 711500 484154	E1 2CL	8711500484178	200

P21/5W



Ordering number	V	W	Base	GOC	EAN1	ECE	EAN3	Packing quantity
13499B2	24	21/5	BAY15d	40456530	8 711500 404565	E1 2CU	8711500405371	10
13499CP	24	21/5	BAY15d	48424673	8 711500 484246	E1 2CU	8711500484260	200

PY21W MasterLife



Ordering number	V	W	Base	GOC	EAN1	ECE	EAN3	Packing quantity
13496MLCP	24	21	BAU15s	69964773	8 727900 699647	E2 2F9	8727900699661	200

Stop lamps

Stop P22



Ordering number	V	W	Base	GOC	EAN1	ECE	EAN3	Packing quantity
13401CP	24	15	BA15s	87826773	8 711500 878267	-	8711500878281	200
13402CP	24	15	BA15d	87836673	8 711500 878366	-	8711500878380	200

Stop P25



Ordering number	V	W	Base	GOC	EAN1	ECE	EAN3	Packing quantity
13445CP	24	18	BA15s	48443773	8 711500 484437	-	8711500484451	200

Rear parking lamps

R5W MasterLife



Ordering number	V	W	Base	GOC	EAN1	ECE	EAN3	Packing quantity
13821MLCP	24	5	BA15s	69970873	8 727900 699708	E1 2BB	8727900699722	200

R5W MasterDuty



Ordering number	V	W	Base	GOC	EAN1	ECE	EAN3	Packing quantity
13821MDCP	24	5	BA15s	69955573	8 727900 699555	E1 2BB	8727900699579	200

R5W



Ordering number	V	W	Base	GOC	EAN1	ECE	EAN3	Packing quantity
13821B2	24	5	BA15s	40453430	8 711500 404534	E1 2BB	8711500405425	10
13821CP	24	5	BA15s	48338673	8 711500 483386	E1 2BB	8711500483409	200

R10W MasterLife



Ordering number	V	W	Base	GOC	EAN1	ECE	EAN3	Packing quantity
13814MLCP	24	10	BA15s	69967873	8 727900 699678	E1 2BH	8727900699692	200

R10W MasterDuty



Ordering number	V	W	Base	GOC	EAN1	ECE	EAN3	Packing quantity
13814MDCP	24	10	BA15s	69952473	8 727900 699524	E1 2BH	8727900699548	200

R10W



Ordering number	V	W	Base	GOC	EAN1	ECE	EAN3	Packing quantity
13814B2	24	10	BA15s	40452730	8 711500 404527	E1 2BH	8711559526409	10
13814CP	24	10	BA15s	48344773	8 711500 483447	E1 2BH	8711500483461	200

Auxiliary lamps

T4W MasterLife



Ordering number	V	W	Base	GOC	EAN1	ECE	EAN3	Packing quantity
13929MLCP	24	4	BA9s	69976073	8 727900 699760	E1 2BX	8727900699784	200

T4W MasterDuty



Ordering number	V	W	Base	GOC	EAN1	ECE	EAN3	Packing quantity
13929MDCP	24	4	BA9s	69958673	8 727900 699586	E1 2BX	8727900699609	200

T4W



Ordering number	V	W	Base	GOC	EAN1	ECE	EAN3	Packing quantity
13929B2	24	4	BA9s	40454130	8 711500 404541	E1 2BX	8711500405432	10
13929CP	24	4	BA9s	21985573	8 711500 219855	E1 2BX	8711500219879	200

T2W - T3W



Ordering number	V	W	Base	GOC	EAN1	ECE	EAN3	Packing quantity
13910CP	24	3	BA9s	21955873	8 711500 219558	-	8711500219572	200
13913CP	24	2	BA9s	22003573	8 711500 220035	-	8711500220059	200

Miniature halogen signaling USA

H21W



Ordering number	V	W	Base	GOC	EAN1	ECE	EAN3	Packing quantity
24356CP	24	21	BAY9s	87615773	8 711500 876157	-	8711500876171	200

Wedge base

W2,5W - W3W



Ordering number	V	W	Base	GOC	EAN1	ECE	EAN3	Packing quantity
13256CP	24	3	W2,1x9,5d	48141273	8 711500 481412	E1 2CF	8711500481436	200
13960CP	24	2.5	W2,1x9,5d	48147473	8 711500 481474	E1 2CF	8711500481498	200

W5W



Ordering number	V	W	Base	GOC	EAN1	ECE	EAN3	Packing quantity
13961B2	24	5	W2,1x9,5d	52420730	8 711559 524207	E1 2CB	8711559524214	10
13961CP	24	5	W2,1x9,5d	48138273	8 711500 481382	E1 2CB	8711500481405	200

WB T5



Ordering number	V	W	Base	GOC	EAN1	ECE	EAN3	Packing quantity
13516CP	24	1.2	W2x4,6d	48306573	8 711500 483065	-	8711500483089	200
13521CP	24	1	W2x4,6d	48324973	8 711500 483249	-	8711500483263	200
13974CP	24	2	W2x4,6d	48318873	8 711500 483188	-	8711500483201	200

Bax

Bax 8,3s/1,35 grey



Ordering number	V	W	Base	GOC	EAN1	ECE	EAN3	Packing quantity
13597CP	24	1.2	Bax 8,3s/1,35 grey	48384373	8 711500 483843	-	8711500483867	200

Bax 8,5d/2 grey



Ordering number	V	W	Base	GOC	EAN1	ECE	EAN3	Packing quantity
13598CP	24	1.2	Bax 8,5d/2 grey	48390473	8 711500 483904	-	8711500483928	200

Bax 8,5d brown



Ordering number	V	W	Base	GOC	EAN1	ECE	EAN3	Packing quantity
24032CP	24	1.2	Bax 8,5d Brown	48852773	8 711500 488527	-	8711500488541	200

Bax 8,5d/2 yellow



Ordering number	V	W	Base	GOC	EAN1	ECE	EAN3	Packing quantity
24029CP	24	1.2	Bax 8,5d/2 yellow	48402473	8 711500 484024	-	8711500484048	200

Festoon

Festoon T6,2x27



Ordering number	V	W	Base	GOC	EAN1	ECE	EAN3	Packing quantity
13818CP	24	3	SV6	48464273	8 711500 484642	-	8711500484666	200

Festoon T6,2x35



Ordering number	V	W	Base	GOC	EAN1	ECE	EAN3	Packing quantity
13848CP	24	3	SV6	48470373	8 711500 484703	-	8711500484727	200

Festoon T6,2x35 10W



Ordering number	V	W	Base	GOC	EAN1	ECE	EAN3	Packing quantity
13854CP	24	10	SV8,5	48251873	8 711500 482518	-	8711500482532	200

C5W



Ordering number	V	W	Base	GOC	EAN1	ECE	EAN3	Packing quantity
13844B2	24	5	SV8,5	40463330	8 711500 404633	E1 2BN	8711500405388	10
13844CP	24	5	SV8,5	48197973	8 711500 481979	E1 2BN	8711500481993	200

Festoon T10,5x43 5W



Ordering number	V	W	Base	GOC	EAN1	ECE	EAN3	Packing quantity
13864CP	24	5	SV8,5	48233473	8 711500 482334	-	8711500482358	200

Festoon T10,5x43 10W



Ordering number	V	W	Base	GOC	EAN1	ECE	EAN3	Packing quantity
13866CP	24	10	SV8,5	48245773	8 711500 482457	-	8711500482471	200

Festoon T15x43 18W



Ordering number	V	W	Base	GOC	EAN1	ECE	EAN3	Packing quantity
13807CP	24	18	SV8,5	48294573	8 711500 482945	-	8711500482969	200

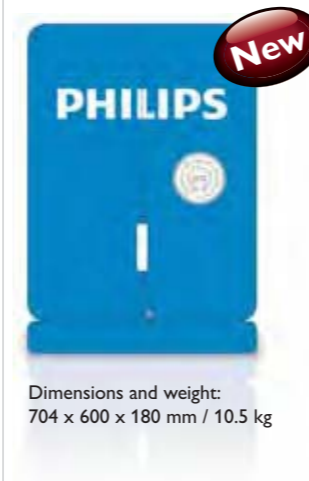
Festoon T15x43 15W



Ordering number	V	W	Base	GOC	EAN1	ECE	EAN3	Packing quantity
13850CP	24	15	SV8,5	48288473	8 711500 482884	-	8711500482907	200

> For 24V LED interior lighting, please refer to pages 40-44

24V sales and marketing tool



Dimensions and weight:
704 x 600 x 180 mm / 10.5 kg

Philips 24V metallic wall dispenser

Description	Ordering number	GOC	EAN1	EAN3
24V Metallic wall dispenser	56201CD	39037766	8727900390377	8727900390384
24V Metallic wall dispenser + lamp tester	56204CD	39033966	8727900390339	8727900390346

Philips metallic wall dispenser - content

Description	V	W	Ordering number	Qty	Description	V	W	Ordering number	Qty
H1 MasterDuty	24	70	13258 MDC1	10	R10W BA15s	24	10	13814 CP	10
H3 MasterDuty	24	70	13336 MDC1	20	R5W BA15s	24	5	13821 CP	20
H4 MasterDuty	24	75/70	13342 MDC1	10	W5W	24	5	13961 CP	20
H7 MasterDuty	24	70	13972 MDC1	10	W3W	24	3	13256 CP	10
P21W BA15s	24	21	13498 CP	20	W1.2W	24	1.2	13516 CP	10
P21/5W BAY15d	24	21/5	13499 CP	10	T4W BA9s	24	4	13929 CP	20
PY21W HDLL BAUI5s	24	21	13496 HDLL CP	10	Bax 1.2W 8,3s grey	24	1.2	13597 CP	10
C10W 10,5x43	24	10	13866 CP	10	Bax 1.2W 8,5d grey	24	1.2	13598 CP	10
C5W 11x35	24	5	13844 CP	10	Bax 1.2W 8,5d/2 yellow	24	1.2	24029 CP	10
C5W 10,5x43	24	5	13864 CP	10					

Tools image is non-contractual. May be modified by Philips.

24V Spare kits

MiniKit H4 MasterDuty



Ordering number	V	W	Base	GOC	EAN1	ECE	EAN3	Packing quantity
55554SKMDKM	24	-	-	69586130	8 727900 695861	-	8727900695885	10

Content

Lamp type	H4	H7	P21W	R10W	R5W	C5W	T4W	Fuse 15A	Fuse 20A	Fuse 30A
Quantity	1		1	1	1	1	1	1	1	1

MiniKit H7 MasterDuty



Ordering number	V	W	Base	GOC	EAN1	ECE	EAN3	Packing quantity
55555SKMDKM	24	-	-	69590830	8 727900 695908	-	8727900695939	10

Content

Lamp type	H4	H7	P21W	R10W	R5W	C5W	T4W	Fuse 15A	Fuse 20A	Fuse 30A
Quantity	-	1	1	1	1	1	1	1	1	1

MaxiKit H4 MasterDuty



Ordering number	V	W	Base	GOC	EAN1	ECE	EAN3	Packing quantity
55559LKMDKM	24	-	-	69684494	8 727900 696844	-	8727900696851	4

Content

Lamp type	H4	P21W	P21/5W	PY21W	R5W	R10W	C5W	T4W	W5W	Fuse 10A	Fuse 15A	Fuse 20A	Fuse 30A
Quantity	2	2	2	1	3	2	2	1	1	2	2	2	2

MaxiKit H7 MasterDuty



Ordering number	V	W	Base	GOC	EAN1	ECE	EAN3	Packing quantity
55560LKMDKM	24	-	-	69686894	8 727900 696868	-	8727900696875	4

Content

Lamp type	H7	P21W	P21/5W	PY21W	R5W	R10W	C5W	T4W	W5W	Fuse 10A	Fuse 15A	Fuse 20A	Fuse 30A
Quantity	2	2	2	1	3	2	2	1	1	2	2	2	2

MaxiKit H1/H7 MasterDuty



Ordering number	V	W	Base	GOC	EAN1	ECE	EAN3	Packing quantity
55561LKMDKM	24	-	-	69688294	8 727900 696882	-	8727900696899	4

Content

Lamp type	H1	H7	P21W	P21/5W	PY21W	R5W	R10W	C5W	T4W	W5W	Fuse 10A	Fuse 15A	Fuse 20A	Fuse 30A
Quantity	1	1	2	2	1	3	2	2	1	1	2	2	2	2



12V Two-wheeler lighting

At Philips, we believe that road safety begins with appropriate lighting. Our motorcycle lighting solutions are engineered to provide a powerful, bright light for **maximum safety**.

Being seen on a motorcycle is equally important as seeing, so we have designed a full range of lighting solutions to provide the **safety** your customer needs as well as the **styling** he's been looking for.

Which two-wheeler lamp do you need?



Feel safe, ride safe

<p>30% more light</p> <p>Vision Moto</p> <p>+30%</p> <p>★★★★☆ Overall performance</p> <p>Available in H4, H7, H51</p>	<p>See & be seen</p> <p>CityVision Moto</p> <p>+40%</p> <p>★★★★☆ Overall performance</p> <p>Available in H4, H7, H51</p>	<p>100% more light</p> <p>X-tremeVision Moto</p> <p>+100%</p> <p>★★★★★ Overall performance</p> <p>Available in H4, H7, H51</p>
--	---	---

Ride with style

Xenon
ultimate effect

BlueVision Moto

★★★★☆
Overall performance

Available in
H4, H7



To find the type of lamp you need for your car visit our [Two-wheeler application guide](#)

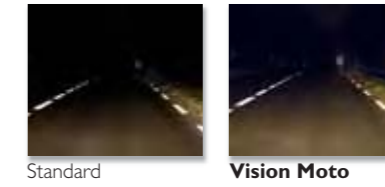
More light

Vision Moto 30% more light*

- Competitive price
- Greater light-beam projection
- High-quality quartz glass
- Original Equipment quality

Producing **30% more light** than a standard lamp, Vision Moto allows riders to see farther with improved light beam performance at a very **competitive price**.
For greater safety, choose Vision Moto!

*Compared to a standard lamp



Standard

Vision Moto

Available in



H4



H7



H51



More light

CityVision Moto See and be seen

- Distinctive orange effect
- Maximum safety
- Specifically designed for city use
- 40% more bright light*
- High-quality quartz glass

*Compared to a standard lamp

For maximum safety and visibility, Philips offers the CityVision Moto lighting solution with a distinctive, **attention-grabbing orange effect** in the headlight. Motorcycle riders everywhere are looking for more safety, especially riders in heavy city traffic. Philips has specifically engineered the CityVision Moto for **maximum visibility** as well as **maximum safety**. Producing an orange effect quickly seen by other drivers, the CityVision Moto also produces **40% more bright white light** so that riders can **see farther** for maximum safety.



Standard

CityVision Moto



Available in



H4



H7



H51

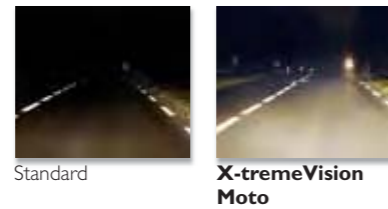
More light

X-tremeVision Moto

Up to 100% more light*

- Maximum brightness
- High-quality quartz glass
- Unique gas filling for optimal lifetime and durability
- Up to 35-meter longer beam*
- Maximum comfort and safety

X-tremeVision Moto is engineered with state-of-the-art technology based on a unique filament design and optimized geometry for **maximum performance** and bright, white light where it matters most. Philips X-tremeVision Moto offers up to **100% more light** for riders who need to see farther for **ultimate performance** and **safety**.



Standard

X-tremeVision Moto



Available in



H4



H7

Style

BlueVision Moto Xenon ultimate effect

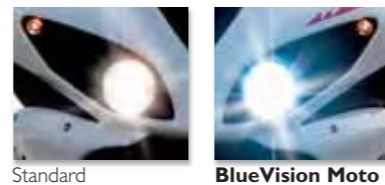
- Stylish blue xenon effect in the headlight
- 4 000 K bright white light on the road
- Exclusive Gradient Coating™ technology
- High-quality quartz glass
- Ultimate style

For riders seeking ultimate style, discover Philips BlueVision Moto with its **ultimate blue xenon effect**.

Philips unique, state-of-the-art Gradient Coating™ technology creates the stylish xenon effect in the headlight while producing a powerful 4 000 K bright, white light on the road.

It is unmatched in a fully homologated road-legal lamp. This is the stylish lamp your customers has been waiting for!

*Compared to a standard lamp



Standard

BlueVision Moto



Available in



H4



H7



Which lamp for which function



Vision Moto
30% more light



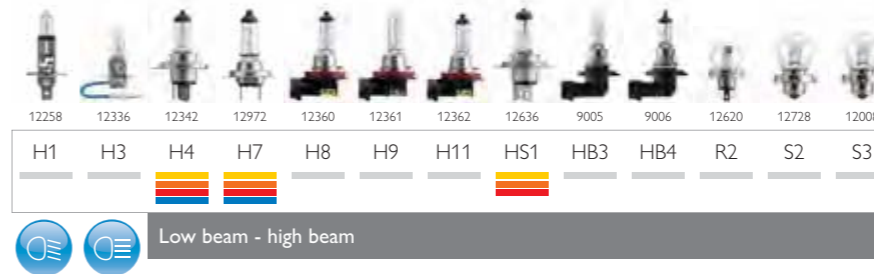
CityVision Moto
See and be seen



X-tremeVision Moto
Up to 100% more light



BlueVision Moto
Xenon ultimate effect



Available in Standard

H4 Vision Moto



Ordering number	V	W	Base	GOC	EAN1	ECE	EAN3	Packing quantity
12342PRBW	12	60/55	P43t-38	49024730	8 711500 490247	E1 2C3	8711500490254	10

H4 CityVision Moto



Ordering number	V	W	Base	GOC	EAN1	ECE	EAN3	Packing quantity
12342CTVBW	12	60/55	P43t-38	39896030	8 727900 398960	E1 2C3	8727900398977	10

H4 X-tremeVision Moto



Ordering number	V	W	Base	GOC	EAN1	ECE	EAN3	Packing quantity
12342XVBW	12	60/55	P43t-38	36229930	8 727900 362299	E1 2C3	8727900362305	10

H4 BlueVision Moto



Ordering number	V	W	Base	GOC	EAN1	ECE	EAN3	Packing quantity
12342BVUBW	12	60/55	P43t-38	36231230	8 727900 362312	E1 2C3	8727900362329	10

H7 Vision Moto



Ordering number	V	W	Base	GOC	EAN1	ECE	EAN3	Packing quantity
12972PRBW	12	55	PX26d	49026130	8 711500 490261	E1 22Z	8711500490278	10

H7 CityVision Moto



Ordering number	V	W	Base	GOC	EAN1	ECE	EAN3	Packing quantity
12972CTVBW	12	55	PX26d	39898430	8 727900 398984	E1 22Z	8727900398991	10

H7 X-tremeVision Moto



Ordering number	V	W	Base	GOC	EAN1	ECE	EAN3	Packing quantity
12972XVBW	12	55	PX26d	35151430	8 727900 351514	E1 22Z	8727900351521	10

H7 BlueVision Moto



Ordering number	V	W	Base	GOC	EAN1	ECE	EAN3	Packing quantity
12972BVUBW	12	55	PX26d	35153830	8 727900 351538	E1 22Z	8727900351545	10

HS1 Vision Moto



Ordering number	V	W	Base	GOC	EAN1	ECE	EAN3	Packing quantity
12636BW	12	35/35	PX43t	53035330	8 727900 530353	E1 2E5	8727900530360	10

HS1 CityVision Moto



Ordering number	V	W	Base	GOC	EAN1	ECE	EAN3	Packing quantity
12636CTVBW	12	35/35	PX43t	39894630	8 727900 398946	E1 2E5	8727900398953	10

S2



Ordering number	V	W	Base	GOC	EAN1	ECE	EAN3	Packing quantity
12728BW	12	35/35	BA20d	77385230	8 711500 773852	E1 2D1	8711500773869	10

S3



Ordering number	V	W	Base	GOC	EAN1	ECE	EAN3	Packing quantity
12008BW	12	15	P26s	77381430	8 711500 773814	E1 21Z	8711500773845	10
12008C1	12	15	P26s	77394460	8 711500 773944	E1 21Z	8711500773951	100

Signaling lamps

W3W



Ordering number	V	W	Base	GOC	EAN1	ECE	EAN3	Packing quantity
12256B2	12	3	W2,1x9,5d	52410830	8 711559 524108	E1 2CD	8711559524122	10
12256CP	12	3	W2,1x9,5d	48144373	8 711500 481443	E1 2CD	8711500481467	200

P21W



Ordering number	V	W	Base	GOC	EAN1	ECE	EAN3	Packing quantity
12498B2	12	21	BA15s	5549130	8 711500 055491	E1 2CH	8711559520131	10
12498CP	12	21	BA15s	49078073	8 711500 490780	E1 2CH	8711500490803	200

P21/5W ExtraDuty



Ordering number	V	W	Base	GOC	EAN1	ECE	EAN3	Packing quantity
12499EDBW	12	21/5	BAY15d	87900430	8 711500 879004	E1 2CR	8711500879035	20

Two-wheeler sales and marketing tool



Two-wheeler counter display

3 H4 BVU Moto | 6 H7 BVU Moto | 2 H4 XV Moto | 6 H7 XV Moto |

Two-wheeler sales tools ordering information

Description	Ordering number	GOC	EAN1	EAN3
Two-wheeler counter display	19813SX	38535966	8727900385359	8727900385366



Safety

Headlight restoration kit
Restores headlight lenses to like-new condition!

- Less glare and up to 100% brighter lens
- Provides safer nighttime driving
- Removes haze and yellowing from harmful UV-rays and dirt
- Professional results without power tools in 30 minutes
- High quality and economical
- 2-year UV-protection guaranteed

New



Before



After Headlight restoration kit

Restores headlight lenses to like-new condition!

Removes the fading and yellowing of headlight lenses and restores them to their original state of transparency for greater safety. Headlight lenses fade and oxidize from constant exposure to the elements and become scratched due to impacts. The protective UV-coating applied at the factory deteriorates causing the lenses to yellow, which can result in a **40% loss of nighttime light**. The **Headlight restoration kit** contains all you need to restore two headlight lenses of any vehicle for your customer's **safety** and **satisfaction**.



Headlight restoration kit

Philips has developed the new Headlight restoration kit to restore automobile, truck and two-wheeler lenses to like-new condition with professional results without the need of any power tools. This is a high-quality and cost-effective alternative to complete headlight replacement. Its UV-protection is guaranteed for two years. A smart addition to automotive lighting and a handy addition to your toolbox! Your customers' satisfaction guaranteed!

Headlight restoration kit sales and marketing tool



Non-contractual image

Headlight restoration kit counter display

To order this sales tool, please contact your Philips sales representative.

Headlight restoration kit



Ordering number	GOC	EAN1	EAN3	Packing quantity
HRK00XM	38819031	8 727900 399769	8727900399776	6



Feel safe, ride safe

Saferide LED Bikelight 40

3x more light*

Battery-powered
Dynamo-powered

Philips Saferide LED Bikelight 40 is the perfect choice for those seeking greater nighttime safety. Discover Philips Saferide LED Bikelight 40 with new generation, high-power LUXEON® LEDs producing 40 lux, crystal-white, 5 500 K illumination.

Enjoy the automatic light sensor and the 4-minute standlight function on the dynamo-powered models. Take control of your safety at the right price!

Feel safe, ride safe

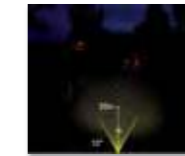
Saferide LED Bikelight 60

5x more light*

Dynamo-powered

Producing 5x more light, the Saferide LED Bikelight 60 offers increased performance for maximum safety. Two new generation, high-power LUXEON® LEDs create a crystal-white light at 5 500 K, producing 60 lux at 10 meters with an extra-wide 50° illumination using a high-efficiency reflector. See up to 50 meters with its uniform motorcycle-lighting performance and powerful Saferide foreground illumination. Simple to install, simple to use.

Front lighting



Standard bicycle light 10 lux



Saferide LED Bikelight 40

- Light performance**
- 3x more light*
 - Crystal-white 5 500 K light
 - Powered by high-power LUXEON® LEDs
 - 40 lux at 10 meters
 - See up to 30 meters
 - Extra-wide 50° illumination
 - Glare-free
 - Saferide powerful foreground illumination

- Design**
- High-efficiency reflector
 - Simple installation and compact design
 - Compatible with all types of bikes

- User benefits**
- Automatic light sensor (dynamo-powered)
 - 4-minute standlight function (dynamo-powered)
 - StVZO compliant

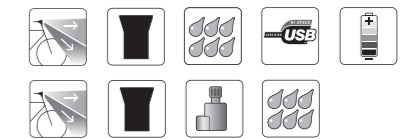


Battery-powered



Dynamo-powered

*Compared to legally required lighting



Light performance

- 5x more light*
- Crystal-white 5 500 K light
- 2 new generation, high-power LUXEON® LEDs
- 60 lux at 10 meters
- Up to 50-meter uniform motorcycle-lighting performance
- Extra wide 50° illumination
- Glare-free
- Saferide powerful foreground illumination

- Design**
- High-efficiency reflector
 - Simple installation and compact design
 - Compatible with all types of bikes

- User benefits**
- 4-minute standlight function
 - Compatible with all dynamos
 - Robust aluminum housing
 - Water-resistant – IP63
 - Long-life LED technology
 - StVZO compliant



Standard bicycle light 10 lux



Saferide LED Bikelight 60



*Compared to legally required lighting



LED Bike lighting solutions

Philips Automotive is the world leader in automotive lighting. We now offer our long experience and know-how to the service of today's rising population of bicycle riders.

Our high-power LEDs produce an extra-wide, uniform light beam comparable to a motorcycle beam. Our LED Bike lighting range is designed and developed for consumer safety, comfort and style.

Discover our complete line of innovative bike-lighting solutions that will help you satisfy all your customer's needs.



Feel safe, ride safe

Saferide LED Bikelight 80

7x more light*

Battery-powered

Producing 7x more light, Philips Saferide LED Bikelight 80 delivers 80 lux at 10 meters for maximum safety and visibility. Offering up to 60 meters of uniform motorcycle-lighting performance, the Philips Saferide LED Bikelight 80 is the perfect choice for riders seeking maximum performance and maximum safety. Simplicity and power at its best.



Standard bicycle light 10 lux



Saferide LED Bikelight 80

Light performance

- 7x more light*
- Ultra-bright, crystal-white 5 500 K light
- 2 new generation, high-power LUXEON® LEDs
- 80 lux at 10 meters
- Up to 60-meter uniform motorcycle-lighting performance
- Extra wide 50° illumination
- Glare-free
- Saferide powerful foreground illumination

Design

- High-efficiency reflector
- Robust, waterproof aluminum housing - IP63
- Simple installation and compact design
- Compatible with all types of bikes

User benefits

- Available in black or glossy, white aluminum finish
- Long-life LED technology
- StVZO compliant

Battery

- 4 Philips AA NiMH batteries included
- Capacity: 2600mAh
- Charging time: 8 h
 - High-power mode: up to 2,5 h
 - City-eco mode (35 lux): up to 8 h

*Compared to legally required lighting



Freedom to ride

Activeride LED Dual beam 800

Battery-powered with silicon battery pack

Offering maximum off-road illumination, the Activeride LED Dual Beam 800 produces a powerful beam created by four new generation, high-power LUXEON® LEDs.

The Activeride Dual Beam 800 offers both an off-road beam producing 70 lux lighting at 10 meters for maximum illumination and a comfortable on-road beam producing 50 lux at 10 meters for a safe ride on city streets.

Activeride LED Dual beam 800 offers the freedom to ride your customers expect!

Light performance

- Bright crystal-white 5 000 K light
- 4 new generation, high-power LEDs

Dual-beam performance

Off-road beam

- 800 lumens
- 70-lux at 10 meters

On-road beam

- 400 lumens
- 50-lux at 10 meters

Design

- High-efficiency reflector
- Simple installation and compact design
- 3D-Axis handlebar bracket mount
- Compatible with all types of bikes
- Robust aluminum housing with rubber protection
- Shock-absorbent IK06
- Water and dirt-resistant IP64

User benefits

- Long-life LED technology
- Silicone battery pack

Battery

- Lithium Ion battery included
 - Capacity: 2200 mAh 12,6V
 - Charging time: 8 h
- Off-road high-power mode: up to 2,5 h
- Off-road low-power mode: up to 7 h
- On-road mode: up to 4 h
- Saferide home mode: up to 1 h



More light

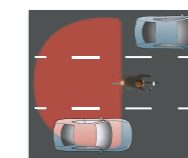
LED Rearlight Lumiring 320° Visibility

Battery-powered

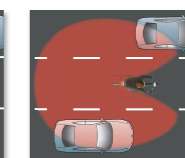
Dynamo-powered

320° visibility with unique Lightguide technology makes the LED Rearlight Lumiring the **perfect choice for riders!** Featuring a premium design with Philips unique lighting signature, Lightguide technology and 320° visibility, the LED Rearlight Lumiring is designed for maximum visibility and safety. Easy to install and compatible with all dynamos, it's waterproof, has a standlight function (dynamo-powered version), and fits standard 50 and 80 mm racks. Its Long-life LED technology requires no maintenance.

Rear lighting



Standard bicycle rear light



LED Rearlight Lumiring 320°



Battery-powered



Dynamo-powered

Light performance

- 320° visibility

Design

- Premium design
- Unique Philips lighting signature with unique Lightguide technology (as used in DRL LED DayLightGuide)
- Waterproof

User benefits

- Standlight function (dynamo-powered)
- Long-life LED technology
- Fits standard 50 and 80 mm racks
- No maintenance
- With blinking mode: StVZO non-compliant*
- Without blinking mode: StVZO compliant

*In certain European countries it is illegal to ride with a blinking rear light. Be sure to check the regulations in your country.

More light

LED Rearlight Lightring 220° Visibility*

Battery-powered

Dynamo-powered

Offering a powerful LED light in a compact unit, the Philips LED Rearlight Lightring is the perfect small rear bike-lighting solution!

Available in either a dynamo or battery-powered version, the Philips LED Rearlight Lightring delivers 220° visibility with Lightring technology and dual mounting possibilities with its quick and simple mounting bracket. Blinking red LED available with the battery-powered version for extra long autonomy.

Light performance

- 220° visibility Lightring technology
- Powerful LED light

Design

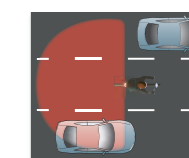
- Red color LED
- Simple and robust mounting
- Compact housing

User benefits

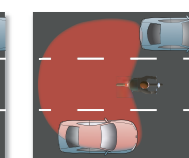
- Multi-version
 - High autonomy battery (non-blinking)
 - High autonomy battery (blinking)
 - Universal dynamo
- Long-life LED technology
- No maintenance

- With blinking mode: StVZO non-compliant*
- Without blinking mode: StVZO compliant

*In certain European countries it is illegal to ride with a blinking rear light. Be sure to check the regulations in your country.



Standard bicycle rear light



LED Rearlight Lightring 220°



Battery-powered



Dynamo-powered

Accessories

Standard and 3D-Axis handlebar brackets

Mounting accessory for Philips battery-powered LED Bike lights

Battery-powered Philips LED Bike lights mount in no time with Philips versatile, sturdy and adjustable handlebar brackets.

The **3D axis handlebar bracket** is designed for modern bikes with tilted handlebars and is fully adjustable.

The **Standard handlebar bracket** supports any battery weight with ease. **Philips handlebar brackets** install quickly and easily without any tools and fit nearly all diameter handlebar tubes (21-32 mm).

Front



Standard handlebar bracket Design

- Tool-free mounting
- Quick and easy adjustment
- Sturdy design supports heavy battery weight
- Fits almost all handlebar tubes (21-32 mm)

Compatibility

- Saferide LED Bikelight 40 - battery-powered
- Saferide LED Bikelight 80 - battery-powered
- Activeride LED Dual Beam 800 - battery-powered

3D-Axis handlebar bracket Design

- Tool-free mounting
- Quick and easy adjustment
- Left/right angle adjustable bracket
- Fits almost all handlebar tubes (21-32 mm)

Compatibility

- Saferide LED Bikelight 40 - battery-powered
- Activeride LED Dual Beam 800 - battery-powered

Accessories

Seatpost holder

Mounting accessory for Philips rear LED Bike lights

Mounts Philips LED Rearlight Lumiring easily and rapidly without any tools. Fits nearly all diameter seatpost tubes.

Rear



Design

- Tool-free mounting
- Quick and easy adjustment
- Sturdy design
- Versatile

Compatibility

- LED Rearlight Lumiring

Saferide LED Bikelight 40 battery-powered

Ordering number	V	W	GOC	EAN1	Color	EAN3	Packing quantity
SRFB40BLX1	5	2.4	35147733	8 727900 351477	Black plastic	8727900351484	2

Saferide LED Bikelight 40 dynamo-powered

Ordering number	V	W	GOC	EAN1	Color	EAN3	Packing quantity
SRFD40BLSX1	6	2.4	35143933	8 727900 351439	Black plastic	8727900351446	2

Saferide LED Bikelight 60 dynamo-powered

Ordering number	V	W	GOC	EAN1	Color	EAN3	Packing quantity
BF60L60BALX1	6	2.4	35053133	8 727900 350531	Silver alu	8727900350548	2
BF60L60BBLX1	6	2.4	35055533	8 727900 350555	Black alu	8727900350562	2

Saferide LED Bikelight 80 battery-powered

Ordering number	V	W	GOC	EAN1	Color	EAN3	Packing quantity
SRFB80BLX1	4.8	6	38760533	8 727900 387605	Black alu	8727900387612	2
SRFB80WHX1	4.8	6	38762933	8 727900 387629	White glossy alu	8727900387636	2

Dual Beam 800 battery-powered with silicon battery pack

Ordering number	V	W	GOC	EAN1	Color	EAN3	Packing quantity
AR800DBX1	12.6	28	38736033	8 727900 387360	Black alu	8727900387377	2

LED Rearlight Lumiring battery-powered

Ordering number	V	W	GOC	EAN1	EAN3	Packing quantity
SRRBLRBNBX1	6	0.6	35137828	8 727900 351378	8727900351385	5
SRRBLRBBX1	6	0.6	35139228	8 727900 351392	8727900351408	5

LED Rearlight Lumiring dynamo-powered

Ordering number	V	W	GOC	EAN1	EAN3	Packing quantity
SRRDLRBLX1	6	0.6	35141528	8 727900 351415	8727900351422	5

LED Rearlight Lightring battery-powered

Ordering number	V	W	GOC	EAN1	EAN3	Packing quantity
SRRBLGBLBX1	6	0.6	38740731	8 727900 387407	8727900387414	6
SRRBLGBLX1	6	0.6	38742131	8 727900 387421	8727900387438	6

LED Rearlight Lightring dynamo-powered

Ordering number	V	W	GOC	EAN1	EAN3	Packing quantity
SRRDLGBLX1	6	0.6	38744531	8 727900 387445	8727900387452	6





Standard handlebar bracket



Ordering number	GOC	EAN1	EAN3	Packing quantity
n/a	35057930	8 727900 350579	8727900350586	10

3D axis handlebar bracket



Ordering number	GOC	EAN1	EAN3	Packing quantity
BA003X1	39962230	8 727900 399622	8727900399639	10

Seatpost holder



Ordering number	GOC	EAN1	EAN3	Packing quantity
BA002	39914130	8 727900 399141	8727900399158	10

Activeride silicon battery pack



Ordering number	GOC	EAN1	EAN3	Packing quantity
BA004X1	39964633	8 727900 399646	8727900399639	2

LED Inspection and LED Work lamps



The new LED Inspection and LED Work lamps draw on Philips recognized expertise in the development and use of lighting across a broad range of applications such as shops, homes, offices and automotive lighting. Discover the new and improved Philips LED Inspection lamps and LED Work lamps designed for professionals where precise, visual inspection is important and where safety and comfort is a must. Manufactured exclusively from high-quality materials to the highest Original Equipment quality standards, these advanced LED inspection and work lighting solutions produce natural yet extremely powerful light, ranging from 6 000 K to 6 500 K, which is the best light spectrum for comfortable and concentrated work.

Philips LED Inspection lamps and LED Work lamps offer professionals best-in-class quality and performance. Providing more light so that professionals can see better and work better, Philips continues to demonstrate that we manufacture the most advanced lighting solutions on the market today.

Which LED Inspection or LED Work lamp do you need?



LED Inspection lamps Ideal for brief inspection			LED Work lamps Ideal for maintenance and inspection work			
120 lumens	120 lumens	200 lumens	220 lumens	300 lumens	330 lumens	600 lumens
Penlight Professional	Penlight Premium	RCH20	RCH30	CBL20	CBL30	MDLS
40° 20 lm Pointer	80° 90 lm Pointer	70°	70° UV leak detector	100°	100° 90 lm Pointer	360° Total illumination
IK07 Shock resistance IP54 Water resistance Grease and solvent resistant	IK07 Shock resistance IP54 Water resistance Grease and solvent resistant	IK07 Shock resistance IP65 Water resistance Grease and solvent resistant	IK09 Shock resistance IP66 Water resistance Grease and solvent resistant	IK07 Shock resistance IP54 Water resistance Grease and solvent resistant	IK07 Shock resistance IP54 Water resistance Grease and solvent resistant	IK07 Shock resistance IP54 Water resistance Grease and solvent resistant
Battery Clip Ultra-slim	Rechargeable Clip, magnet Ultra-slim	Rechargeable Hook, magnet Compact	Rechargeable Hook, magnet Compact	100-240V cable Hook Slim	100-240V cable Hook, magnet Ultra-slim	Rechargeable Clamp, magnet 3 modules
★★★★☆ Overall performance	★★★★☆ Overall performance	★★★★☆ Overall performance	★★★★☆ Overall performance	★★★★☆ Overall performance	★★★★☆ Overall performance	★★★★☆ Overall performance

See clearly. Work better

LED Inspection lamps Ideal for brief inspection work

Philips LED Inspection lamps are ideal for short-term inspection of any area. Easily fitting into any pocket, they offer powerful light in a convenient format.



New

LED Penlight Professional The portable inspection tool

Intense white light for optimal vision

- 120-lumen light output produced by high-quality LEDs
- Natural white light of 6 000 K

Reaches even the narrowest of spaces

- 20-lumen LED pointer on top
- Small and compact

Ready for any inspection work

- Water and dustproof: IP54
- Shock-resistant housing
- 11-hour battery autonomy

Philips LED Penlight Professional is a durable and reliable inspection tool featuring 6 long-lasting and powerful LEDs producing 120 lumens of bright, natural white light for precise inspection of any area.

USB-rechargeable

LED Penlight Premium Compact, high-power LED tool



Work comfortably and fatigue-free

- 120-lumen light output produced by new-generation, high-power LUXEON® Rebel LEDs
- 6 000 K natural white light
- Wide, homogeneous light beam

Discover what remains hidden to others

- Powerful 90-lumen LED pointer

Robust, comfortable and hands-free

- Rotating clip holder with integrated magnet
- Robust aluminum housing with soft-grip handle

Fast-charging and consistent light output

- Latest LFP battery technology (1 200 mAh) with incomparable battery life
- Up to 6-hour battery autonomy

The portable worker's companion that combines high-power LED technology with a robust, user-friendly design in a compact size. Philips LED Penlight Premium is the choice for those who want maximum light in a small size.



To find out more about LED Inspection and LED Work lamps, visit www.philips.com/automotive

LED Work lamps

Ideal for maintenance and inspection work

Philips LED Work lamp range is specifically designed for maintenance and long-term inspection work. These powerful inspection tools are available in either rechargeable (RCH) or cabled (CBL) versions.

Rechargeable

RCH20

Cordless professional lighting tool

White, homogeneous light

- 200-lumen light output produced by single strip, COB (Chip on Board) technology
- 6 000 K color temperature for limited eye-strain
- Wide, homogeneous 70° light beam

Hands-free use

- Powerful integrated magnet
- Retractable hook

Ready-to-use

- Up to 3-hour operating time
- Fast docking-station charging



New



Powerful and cordless, Philips RCH20 LED lighting tool features 200 lumens in a single LED strip for precise and homogeneous lighting.

Multivoltage 100~240V

CBL20

Professional lighting tool

Improved light output

- 300-lumen light output generated by 12 new-generation, high-power quality LEDs
- Ultra-wide, homogeneous 100° light beam
- 6 000 K natural light temperature

Robust and resistant

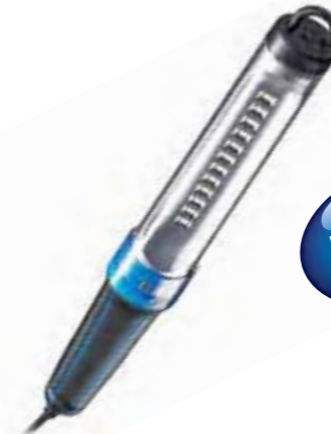
- Robust protection rating: IP54 and IK07
- Operating temperature from -10° up to 40°C

Comfortable and practical

- Comfortable soft-grip handle
- Retractable 360° hook



New



With 12 high-power LEDs producing 300 lumens of intense white light, this inspection lamp is the professional's choice. Its slim design makes the Philips CBL20 an ideal tool for illuminating hard to reach areas.

Rechargeable

RCH30

Cordless professional lighting tool with UV-A leak detector

More light for optimal vision

- 220-lumen light output produced by 8, new-generation, high-power LUXEON® LEDs
- Wide, homogeneous 70° light beam

Robust and highly resistant

- Improved battery capacity: up to 4-hour battery autonomy
- Docking station for inductive charging
- High protection rating: IP66 and IK09

Versatile and easy-to-use

- Integrated magnet
- UV-A light function for air-conditioning leak detection
- Retractable 360° hook
- Smart housing shape for practical positioning on any side



New



Boasting powerful LEDs for precise visual inspection and a UV-A leak detector, the Philips RCH30 inspection lamp is a versatile illumination tool with up to 4-hour battery autonomy.

Multivoltage 100~240V

CBL30

Professional lighting tool with practical focus light

Best-in-class light output

- 330-lumen light output generated by 12 new-generation, high-power LUXEON® LEDs
- Ultra-wide, homogeneous 100° light beam
- Powerful 90-lumen LED focus light
- 6 500 K color temperature for improved contrast

Robust and ultra resistant

- Robust protection rating: IP54 and IK07
- Operating temperature from -10° up to 40°C

Ultra-slim and easy-to-use

- Ultra-slim design that reaches the smallest of spaces
- Versatile 360° magnetic hook for use on any surface
- Soft, ergonomic grip handle



New



With 330 lumens of intense white light, and an ultra-strong 90-lumen focus light, Philips CBL30 LED Inspection lamp is the perfect tool for the most demanding professional.



Rechargeable

MDLS Multidirectional lighting system

Optimum visibility

Replaces four tools

- May be used as light-box, torch, spotlight and light-bar

Optimal multidirectional lighting

- New generation, high-power LUXEON® Rebel LEDs
- Natural white light of 6 000 K
- Each module produces:
 - Normal mode: 120 lumens
 - Boost mode: 200 lumens

Hands-free use

- Powerful magnet
- 300° rotating heads
- 120° directional lenses

Robust and ultra-resistant

- Robust protection rating: IP54 and IK07
- Versatile toolbox for recharging, storing and transport



The Multidirectional lighting system consists of three independent LED modules which may be placed as needed to provide powerful lighting in or around a vehicle, or in any other working area. The Philips MDLS is designed for long-term inspection or repair work where optimum visibility and hands-free lighting are necessary. With all three modules working simultaneously, professionals are able to achieve a shadow-free workspace for optimum efficiency. The MDLS Multidirectional lighting system comes in a versatile toolbox for storing, transporting and recharging the modules.



LED Penlight Professional



Ordering number	V	W	Plug	GOC	EAN1	ECE	EAN3	Packing quantity
LPL19B1	4.5	1.3	-	38819031	8 727900 388190	-	8727900388206	6

LED Penlight Premium



Ordering number	V	W	Plug	GOC	EAN1	ECE	EAN3	Packing quantity
LPL03RECHX1	100-240	6	EU	38752033	8 727900 387520	-	8727900387537	2
LPL04RECHX1	100-240	6	UK	38754433	8 727900 387544	-	8727900387551	2

RCH20 Rechargeable LED Inspection lamp with docking station



Ordering number	V	W	Plug	GOC	EAN1	ECE	EAN3	Packing quantity
LPL12X1	100-240	2.4	EU	38946331	8 727900 389463	-	8727900389470	6
LPL13X1	110-240	2.4	UK	38948731	8 727900 389487	-	8727900389494	6

RCH30 Rechargeable LED Inspection lamp with docking station with UV-A leak detector



Ordering number	V	W	Plug	GOC	EAN1	ECE	EAN3	Packing quantity
LPL10UVX1	100-240	2.5	EU	38942531	8 727900 389425	-	8727900389432	6
LPL11UVX1	100-240	2.5	UK	38944931	8 727900 389449	-	8727900389456	6

CBL20 LED Inspection lamp multivoltage



Ordering number	V	W	Plug	GOC	EAN1	ECE	EAN3	Packing quantity
LPL16X1	100-240	5	EU	38954831	8 727900 389548	-	8727900389555	6

CBL30 LED Inspection lamp multivoltage with focus light



Ordering number	V	W	Plug	GOC	EAN1	ECE	EAN3	Packing quantity
LPL14X1	100-240	5	EU	38950031	8 727900 389500	-	8727900389517	6
LPL15X1	100-240	5	CH	38952431	8 727900 389524	-	8727900389531	6

MDLS LED Multidirectional lighting system



Ordering number	V	W	Plug	GOC	EAN1	ECE	EAN3	Packing quantity
LPL073MODX1	100-240	3.2	EU & UK	38770466	8 727900 387704	-	8727900387711	1

MDLS LED Multidirectional lighting system - spare module



Ordering number	V	W	Plug	GOC	EAN1	ECE	EAN3	Packing quantity
LPL05SPAREX1	100-240	5.7	-	38766733	8 727900 387667	-	8727900387674	2

LED Inspection and LED Work lamps

Sales and marketing tools



LED Penlight Professional counter display
12 Penlight Professional packs



LED Inspection and LED Work lamps floor display

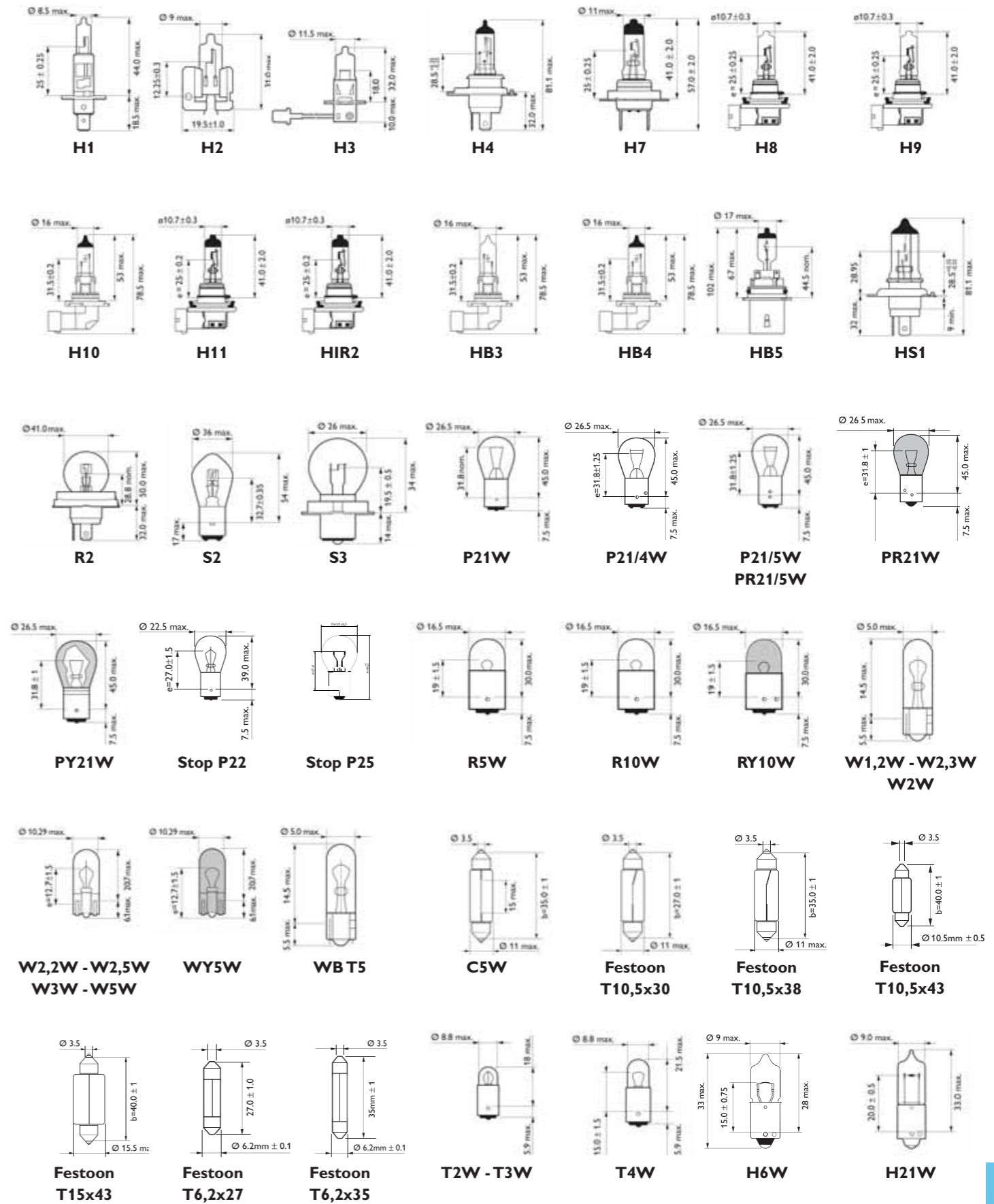


LED Inspection and LED Work lamps metallic floor display

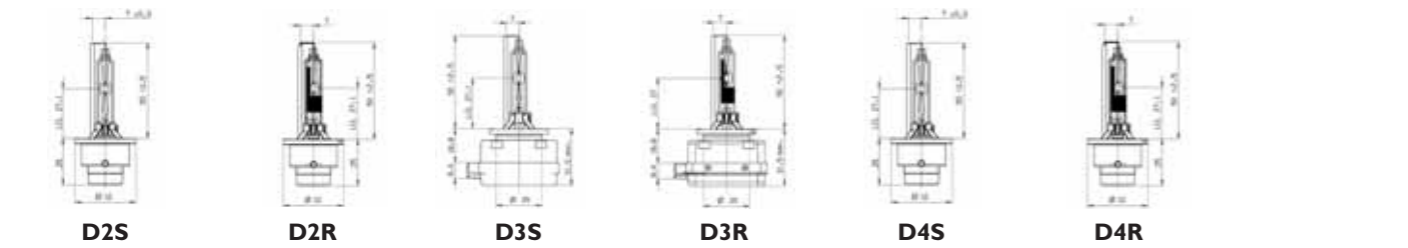
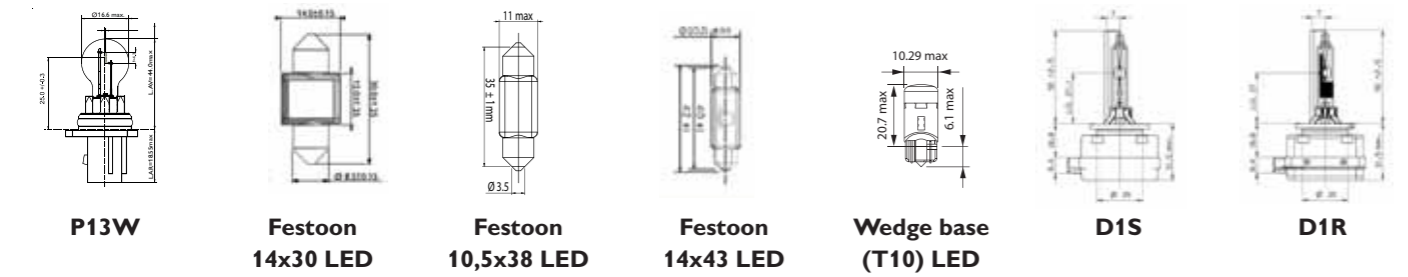
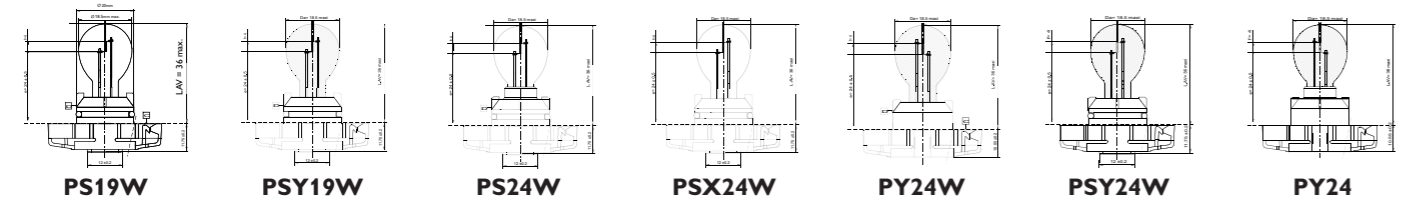
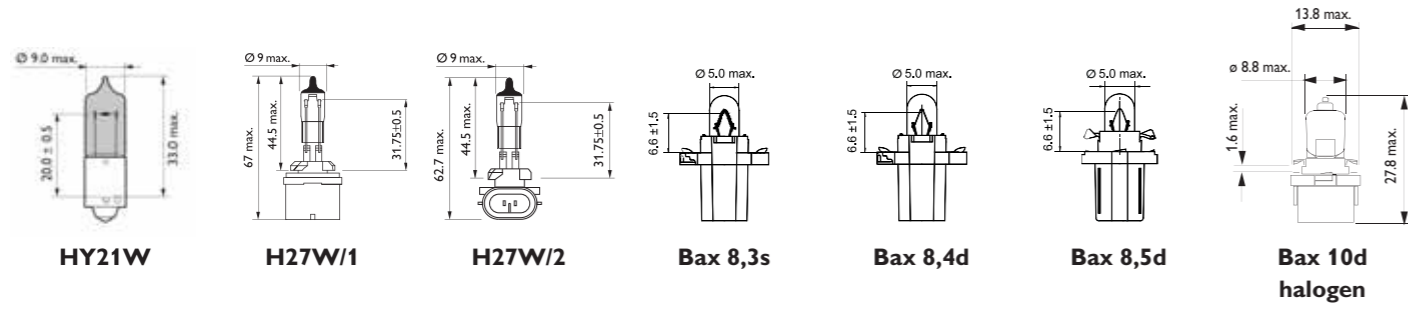
LED Inspection and LED Work lamps tools ordering information					
Description	Ordering number	GOC	EAN1	EAN3	MOQ*
LED Penlight Professional counter display	56142BD	38842866	8727900388428	8727900388435	1
LED Inspection and LED Work lamps floor display	56143XD	38844266	8727900388442	8727900388459	1
LED Inspection and LED Work lamps metallic floor display	56144WSLCD	38846666	8727900388466	8727900388473	1

*MOQ: Minimum Ordering Quantity

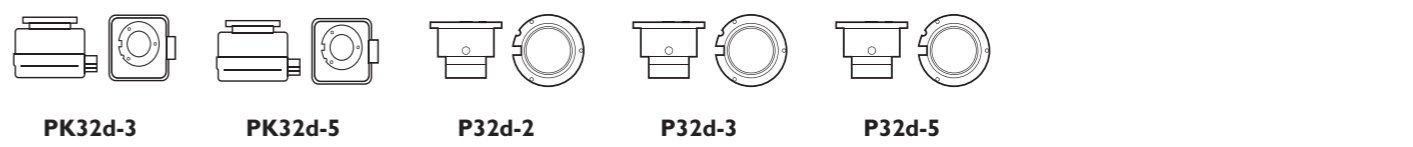
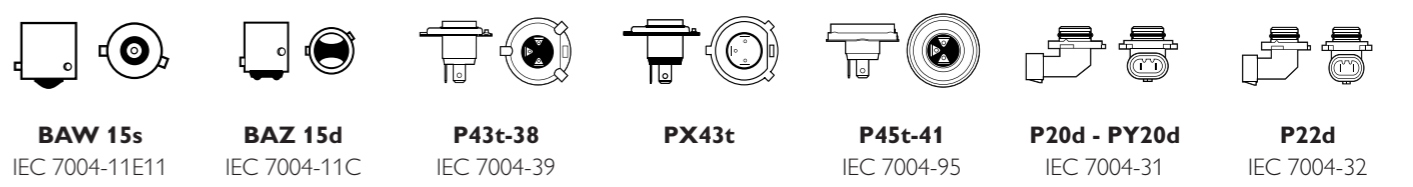
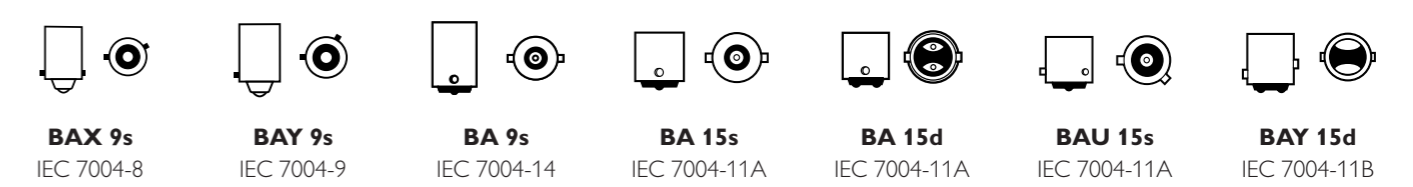
Technical illustrations - lamps



Technical illustrations - lamps



Technical illustrations - bases



Product index

Xenon lighting solutions

Ordering number	Type	Range	V	W	Base	GOC	EAN1	EAN3	Page
85415VIS1	D1S	Vision	85	35	PK32d-2	36489733	8727900364897	8727900364903	10
85415VIC1	D1S	Vision	85	35	PK32d-2	36473633	8727900364736	8727900364743	10
85409VIC1	D1R	Vision	85	35	PK32d-3	36475033	8727900364750	8727900364767	10
85415BVUS1	D1S	BlueVision ultra	85	35	PK32d-2	36550433	8727900365504	8727900365511	10
85415BVUC1	D1S	BlueVision ultra	85	35	PK32d-2	36546733	8727900365467	8727900365443	10
85415XVS1	D1S	X-tremeVision	85	35	PK32d-2	36458333	8727900364583	8727900364613	10
85415XVC1	D1S	X-tremeVision	85	35	PK32d-2	36441533	8727900364415	8727900364439	10
85122VIS1	D2S	Vision	85	35	P32d-2	36491033	8727900364910	8727900364927	10
85122VIC1	D2S	Vision	85	35	P32d-2	36477433	8727900364774	8727900364781	10
85126VIS1	D2R	Vision	85	35	P32d-3	36493433	8727900364934	8727900364941	10
85126VIC1	D2R	Vision	85	35	P32d-3	36479833	8727900364798	8727900364804	10
85122BVUS1	D2S	BlueVision ultra	85	35	P32d-2	36552833	8727900365528	8727900365535	10
85122BVUC1	D2S	BlueVision ultra	85	35	P32d-2	36545033	8727900365450	8727900365474	10
85126BVUS1	D2R	BlueVision ultra	85	35	P32d-3	36554233	8727900365542	8727900365559	10
85126BVUC1	D2R	BlueVision ultra	85	35	P32d-3	36548133	8727900365481	8727900365498	10
85122XVS1	D2S	X-tremeVision	85	35	P32d-2	36462033	8727900364620	8727900364637	10
85122XVC1	D2S	X-tremeVision	85	35	P32d-2	36444633	8727900364446	8727900364453	10
85126XVS1	D2R	X-tremeVision	85	35	P32d-3	36464433	8727900364644	8727900364651	11
85126XVC1	D2R	X-tremeVision	85	35	P32d-3	36446033	8727900364460	8727900364477	11
42403VIS1	D3S	Vision	42	35	PK32d-5	36495833	8727900364958	8727900364965	11
42403VIC1	D3S	Vision	42	35	PK32d-5	36481133	8727900364811	8727900364828	11
42306VIC1	D3R	Vision	42	35	PK32d-6	36483533	8727900364835	8727900364842	11
42403XVS1	D3S	X-tremeVision	42	35	PK32d-5	36466833	8727900364668	8727900364675	11
42403XVC1	D3S	X-tremeVision	42	35	PK32d-5	36448433	8727900364484	8727900364491	11
42402VIC1	D4S	Vision	42	35	P32d-5	36485933	8727900364859	8727900364866	11
42406VIC1	D4R	Vision	42	35	P32d-6	36487333	8727900364873	8727900364880	11

12V Car lighting

Ordering number	Type	Range	V	W	Base	GOC	EAN1	EAN3	Page
12258PRB1	H1	Vision	12	55	P14.5s	47516930	8711500475169	8711500475176	22
12258PRC1	H1	Vision	12	55	P14.5s	47518360	8711500475183	8711500475190	22
12258VPS2	H1	VisionPlus	12	55	P14.5s	36322728	8727900363227	8727900363210	22
12258VPB1	H1	VisionPlus	12	55	P14.5s	36320330	8727900363203	8727900363197	22
12258XVS2	H1	X-tremeVision	12	55	P14.5s	36064628	8727900360646	8727900360653	22
12258XVB1	H1	X-tremeVision	12	55	P14.5s	36067730	8727900360677	8727900360684	22
12258LLECOS2	H1	LongLife EcoVision	12	55	P14.5s	36255828	8727900362558	8727900362565	22
12258LLECOB1	H1	LongLife EcoVision	12	55	P14.5s	36196430	8727900361964	8727900361971	22
12258LLECOB1	H1	LongLife EcoVision	12	55	P14.5s	36187260	8727900361872	8727900361889	22
12258BVUSM	H1	BlueVision ultra	12	55	P14.5s	36062228	8727900360622	8727900360639	22
12258BVUB1	H1	BlueVision ultra	12	55	P14.5s	36069130	8727900360691	8727900360707	22
12258SPC1	H1 Spot	Standard	12	55	P14.5s	40460260	8711500404602	8711500474865	22
12311C1	H2	Standard	12	55	X511	47752160	8711500477521	8711500416070	22
12336PRB1	H3	Vision	12	55	PK22s	69561130	8711500695611	8711500695628	22
12336PRC1	H3	Vision	12	55	PK22s	69534560	8711500695345	8711500695352	22
12336LLECOB1	H3	LongLife EcoVision	12	55	PK22s	77704160	8711500777041	8711500777058	23
12336BVUB1	H3	BlueVision ultra	12	55	PK22s	77688430	8711500776884	8711500776891	23
12342PRB1	H4	Vision	12	60/55	P43t-38	47480330	8711500474803	8711500474810	23
12342PRC1	H4	Vision	12	60/55	P43t-38	49099560	8711500490995	8711500490988	23
12342VPS2	H4	VisionPlus	12	60/55	P43t-38	39925728	8727900399257	8727900399240	23
12342VPB1	H4	VisionPlus	12	60/55	P43t-38	39934930	8727900399349	8727900399332	23
12342XVS2	H4	X-tremeVision	12	60/55	P43t-38	35024128	8727900350241	8727900350258	23
12342XVB1	H4	X-tremeVision	12	60/55	P43t-38	35038830	8727900350388	8727900350395	23
12342LLECOS2	H4	LongLife EcoVision	12	60/55	P43t-38	36257228	8727900362572	8727900362589	23
12342LLECOB1	H4	LongLife EcoVision	12	60/55	P43t-38	36198830	8727900361988	8727900361995	23
12342LLECOB1	H4	LongLife EcoVision	12	60/55	P43t-38	36189660	8727900361896	8727900361919	23
12342BVUSM	H4	BlueVision ultra	12	60/55	P43t-38	35034028	8727900350340	8727900350357	23
12342BVUB1	H4	BlueVision ultra	12	60/55	P43t-38	35030230	8727900350302	8727900350319	23
12972PRB1	H7	Vision	12	55	PX26d	40607130	8711500406071	8711500406088	23

12972PRC1	H7	Vision	12	55	PX26d	40593760	8711500405937	8711500405944	23
12972VPS2	H7	VisionPlus	12	55	PX26d	39938728	8727900399387	8727900399370	24
12972VPB1	H7	VisionPlus	12	55	PX26d	39936330	8727900399363	8727900399356	24
12972XVS2	H7	X-tremeVision	12	55	PX26d	35026528	8727900350265	8727900350272	24
12972XVB1	H7	X-tremeVision	12	55	PX26d	35040130	8727900350401	8727900350418	24
12972LLECOS2	H7	LongLife EcoVision	12	55	PX26d	36259628	8727900362596	8727900362602	24
12972LLECOB1	H7	LongLife EcoVision	12	55	PX26d	36200830	8727900362008	8727900362015	24
12972LLECOB1	H7	LongLife EcoVision	12	55	PX26d	36192660	8727900361926	8727900361933	24
12972BVUSM	H7	BlueVision ultra	12	55	PX26d	35036428	8727900350364	8727900350371	24
12972BVUB1	H7	BlueVision ultra	12	55	PX26d	35032630	8727900350326	8727900350333	24
12360B1	H8	Standard	12	35	PGJ19-1	82416530	8711500824165	8727900362909	24
12360C1	H8	Standard	12	35	PGJ19-1	47582444	8711500475824	8711500490681	24
12361B1	H9	Standard	12	65	PGJ19-5	36308130	8727900363081	8727900363098	24
12361C1	H9	Standard	12	65	PGJ19-5	47584844	8711500475848	8711500490698	24
12362PRB1	H11	Vision	12	55	PGJ19-2	36428630	8727900364286	8727900364293	24
12362PRC1	H11	Vision	12	55	PGJ19-2	36430944	8727900364309	8727900364316	25
12362LLECOB1	H11	LongLife EcoVision	12	55	PGJ19-2	36310430	8727900363104	8727900363111	25
12362LLECOB1	H11	LongLife EcoVision	12	55	PGJ19-2	36194044	8727900361940	8727900361957	25
12362BVUB1	H11	BlueVision ultra	12	55	PGJ19-2	36216930	8727900362169	8727900362176	25
9012LLC1	HIR2	LongLife	12	55	PX22d	35125533	8727900351255	8727900351262	25
12366C1	H16	Standard	12	19	PGJ19-3	36856760	8727900368567	8727900368574	25
9005PRB1	HB3	Vision	12	65	P20d	24724730	8711500247247	8711500247254	25
9005PRC1	HB3	Vision	12	65	P20d	24689960	8711500246899	8711500246905	25
9005BVUB1	HB3	BlueVision ultra	12	65	P20d	35097530	8727900350975	8727900350999	25
9006PRB1	HB4	Vision	12	55	P22d	24726130	8711500247261	8711500247278	26
9006PRC1	HB4	Vision	12	55	P22d	24687560	8711500246875	8711500246882	26
9006BVUB1	HB4	BlueVision ultra	12	55	P22d	35100230	8727900351002	8727900351019	26
9145C1	H10	Standard	12	45	PY20d	52974560	8711559529745	8711559529769	26
9007C1	HB5	Standard	12	65/55	PX29t	24550260	8711500245502	8711500245526	26
12620B1	R2	Standard	12	45/40	P45t-41	5543930	8711500055439	8711559525327	26
12620C1	R2	Standard	12	45/40	P45t-41	40085760	8711500400857	8711500414755	26
12475B1	R2 Visio	Standard	12	45/40	P45t-41	24716230	8711500247162	8711500247179	26
12475C1	R2 Visio	Standard	12	45/40	P45t-41	40466460	8711500404664	8711559514475	26
12498VPB2	P21W	VisionPlus	12	21	BA15s	36318030	8727900363180	8727900363173	27
12498LLECOB2	P21W	LongLife EcoVision	12	21	BA15s	38210530	8727900382105	8727900382112	27
12498LLECOCP	P21W	LongLife EcoVision	12	21	BA15s	38198673	8727900381986	8727900382006	27
12498B2	P21W	Standard	12	21	BA15s	5549130	8711500055491	8711559520131	27
12498CP	P21W	Standard	12	21	BA15s	49078073	8711500490780	8711500490803	27
12594B2	P21/4W	Standard	12	21/4	BAZ15d	40485530	8711500404855	8711500471017	27
12594CP	P21/4W	Standard	12	21/4	BAZ15d	48433873	8711500484338	8711500484352	27
12499VPB2	P21/5W	VisionPlus	12	21/5	BAY15d	36316630	8727900363166	8727900363159	27
12499LLECOB2	P21/5W	LongLife EcoVision	12	21/5	BAY15d	38212930	8727900382129	8727900382136	27
12499LLECOCP	P21/5W	LongLife EcoVision	12	21/5	BAY15d	38201373	8727900382013	8727900382037	27
12499B2	P21/5W	Standard	12	21/5	BAY15d	5545330	8711500055453	8711559520148	27
12499CP	P21/5W	Standard	12	21/5	BAY15d	48159773	8711500481597	8711500481610	27
12495CP	P21/5W	Standard	12	21/5	BAW15d	48873273	8711500488732	8711500488756	27
12496SVS2	PY21W	SilverVision	12	21	BAU15s	47982230	8711500479822	8711500479839	28
12496SVB2	PY21W	SilverVision	12	21	BAU15s	31117730	8711500311177	8711500311191	28
12496LLECOCP	PY21W	LongLife EcoVision	12	21	BAU15s	38218173	8727900382181	8727900382204	28
12496NAB2	PY21W	Standard	12	21	BAU15s	52372930	8711559523729	8711559523743	28
12496NACP	PY21W	Standard	12	21	BAU15s	52534173	8711559525341	8711559525365	28
12088CP	PR21W	Standard							

Ordering number	Type	Range	V	W	Base	GOC	EAN1	EAN3	Page
12505CP	W2W	Standard	12	2	W2x4,6d	48327073	8711500483270	8711500483294	29
12516B2	W1,2W	Standard	12	1.2	W2x4,6d	5554530	8711500055545	8711500417763	29
12516CP	W1,2W	Standard	12	1.2	W2x4,6d	48153573	8711500481535	8711500481559	29
12521CP	WBT5	Standard	12	1	W2x4,6d	48321873	8711500483218	8711500483232	29
12256B2	W3W	Standard	12	3	W2,1x9,5d	52410830	8711559524108	8711559524122	29
12256CP	W3W	Standard	12	3	W2,1x9,5d	48144373	8711500481443	8711500481467	29
12960CP	W2,2W	Standard	12	2.2	W2,1x9,5d	48150473	8711500481504	8711500481528	29
12961BVB2	W5W	BlueVision ultra	12	5	W2,1x9,5d	31029330	8711500310293	8711559523774	30
12961LLECOB2	W5W	LongLife EcoVision	12	5	W2,1x9,5d	38204430	8727900382044	8727900382051	30
12961LLECOCP	W5W	LongLife EcoVision	12	5	W2,1x9,5d	38189473	8727900381894	8727900381917	30
12961B2	W5W	Standard	12	5	W2,1x9,5d	40421330	8711500404213	8711559520070	30
12961CP	W5W	Standard	12	5	W2,1x9,5d	49090273	8711500490902	8711500490926	30
12396NAB2	WY5W	Standard	12	5	W2,1x9,5d	40058130	8711500400581	8711500400598	30
12396NACP	WY5W	Standard	12	5	W2,1x9,5d	53002473	8711559530024	8711559530048	30
12040VPB2	WBT10	Standard	12	6	W2,1x9,5d	52416030	8711559524160	8711559524184	30
12067B2	W16W	Standard	12	16	W2,1x9,5d	40587630	8711500405876	8711559521053	30
12067CP	W16W	Standard	12	16	W2,1x9,5d	48272373	8711500482723	8711500482747	30
12065B2	W21W	Standard	12	21	W3x16d	70146330	8727900701463	8727900701470	30
12065CP	W21W	Standard	12	21	W3x16d	47135273	8711500471352	8711500471376	30
12066B2	W21/5W	Standard	12	21/5i	W3x16q	69739130	8727900697391	8727900697407	30
12066CP	W21/5W	Standard	12	21/5	W3x16q	47138373	8711500471383	8711500471505	30
12071B2	WY21W	Standard	12	21	WX3x16d	69741430	8727900697414	8727900697421	31
12071CP	WY21W	Standard	12	21	WX3x16d	52539673	8711559525396	8711559525419	31
12818CP	Festoon T6,2x27	Standard	12	3	SV6	48461173	8711500484611	8711500484635	31
12848CP	Festoon T6,2x27	Standard	12	3	SV6	48467373	8711500484673	8711500484697	31
12844B2	C5W	Standard	12	5	SV8,5	5551430	8711500055514	8711500417749	31
12844CP	C5W	Standard	12	5	SV8,5	48156673	8711500481566	8711500481580	31
12860LLECOCP	Festoon T10,5x30	LongLife EcoVision	12	10	SV8,5	38192473	8727900381924	8727900381948	31
12854CP	Festoon T10,5x38	Standard	12	10	SV8,5	48248873	8711500482488	8711500482501	31
12864CP	Festoon T10,5x43	Standard	12	5	SV8,5	48205173	8711500482051	8711500482327	31
12866B2	Festoon T10,5x43	Standard	12	10	SV8,5	5552130	8711500055521	8711500417756	31
12866CP	Festoon T10,5x43	Standard	12	10	SV8,5	48242673	8711500482426	8711500482440	31
12850CP	Festoon T15x43	Standard	12	15	SV8,5	48285373	8711500482853	8711500482877	31
12913CP	T2W	Standard	12	2	BA9s	21997873	8711500219978	8711500219992	31
12910CP	T3W	Standard	12	3	BA9s	21949773	8711500219497	8711500219510	32
12929BVB2	T4W	BlueVision ultra	12	4	BA9s	31031630	8711500310316	8711500310392	32
12929B2	T4W	Standard	12	4	BA9s	5550730	8711500055507	8711559520094	32
12929CP	T4W	Standard	12	4	BA9s	21979473	8711500219794	8711500219817	32
12036BVB2	H6W	BlueVision ultra	12	6	BAX9s	24567030	8711500245670	8711500245687	32
12036BVCP	H6W	BlueVision ultra	12	6	BAX9s	87609673	8711500876096	8711500876119	32
12036B2	H6W	Standard	12	6	BAX9s	24720930	8711500247209	8711500247216	32
12036CP	H6W	Standard	12	6	BAX9s	87603473	8711500876034	8711500876058	32
55502GKKM	Bax tool box 12V	Standard	12	-	-	69717928	8727900697179	8727900697230	32
12597B2	Bax 8,3s/1,35 black	Standard	12	1.2	Bax 8,3s/1,35 black	53018530	8711559530185	8711559530192	32
12597CP	Bax 8,3s/1,35 black	Standard	12	1.2	Bax 8,3s/1,35 black	48365273	8711500483652	8711500483676	32
12602CP	Bax 8,3s/1,5 blue	Standard	12	2	Bax 8,3s/1,5 blue	48396673	8711500483966	8711500483980	32
12598B2	Bax 8,5d/2 black	Standard	12	1.2	Bax 8,5d/2 black	40588330	8711500405883	8711500405890	32
12598CP	Bax 8,5d/2 black	Standard	12	1.2	Bax 8,5d/2 black	48387473	8711500483874	8711500483898	32
12603CP	Bax 8,5d/1,5 blue	Standard	12	1.2	Bax 8,5d/1,5 blue	48399773	8711500483997	8711500484017	33
12600CP	Bax 8,5d/2 green	Standard	12	2	Bax 8,5d/2 green	48393573	8711500483935	8711500483959	33
12604CP	Bax 8,5d green	Standard	12	2	Bax 8,5d green	40508173	8711500405081	8711500309662	33
12637CP	Bax 8,5d beige	Standard	12	1.5	Bax 8,5d beige	51487173	8711559514871	8711559512471	33
12615CP	Bax 10d black	Standard	12	5	Bax 10d black	52807673	8711559528076	8711500244147	33
12614CP	Bax 10d brown	Standard	12	3	Bax 10d brown	52805273	8711559528052	8711559513409	33
12623CP	Bax 8,4d light blue	Standard	12	1.2	Bax 8,4d light blue	51384373	8711559513843	8711500244413	33
12627CP	Bax 8,4d beige	Standard	12	1.5	Bax 8,4d beige	51414773	8711559514147	8711500400093	33
12629CP	Bax 8,4d beige	Standard	12	1.8	Bax 8,4d beige	51488873	8711559514888	8711559512716	33
12625CP	Bax 8,4d black	Standard	12	1.2	Bax 8,4d black	51409373	8711559514093	8711500244444	33
12626CP	Bax 8,4d light green	Standard	12	2	Bax 8,4d light green	51412373	8711559514123	8711500246073	34
12628CP	Bax 8,4d olive green	Standard	12	1.3	Bax 8,4d olive green	77432373	8711500774323	8711500774347	34
12624CP	Bax 8,4d orange	Standard	12	1.1	Bax 8,4d orange	51411673	8711559514116	8711500245144	34
12638CP	Bax 8,5d white	Standard	12	1.12	Bax 8,5d white	48846673	8711500488466	8711500488480	34

12023CP	H5W	Standard	12	5	BA9s	51270973	8711559512709	8711559514864	34
12024CP	H10W	Standard	12	10	BA9s	52941773	8711559529417	8711559529844	34
12025CP	H20W	Standard	12	20	BA9s	87600373	8711500876003	8711500876027	34
12356CP	H21W	Standard	12	21	BAY9s	87989973	8711500879899	8711500879912	34
12146CP	HY21W	Standard	12	21	BAW9s	35244373	8727900352443	8727900352467	34
12059C1	H27W/1	Standard	12	27	PG13	52854073	8711559528540	8711559528564	34
12060C1	H27W/2	Standard	12	27	PGJ13	52857173	8711559528571	8711559528595	34
12271AC1	PCY16W	HiPerVision	13.5	16	PU20d/2	38965433	8727900389654	8727900389661	34
12277C1	P13W	HiPerVision	12	13	PG18.5d-1	69672133	8727900696721	8727900699388	35
12085LLC1	PS19W	HiPerVision LongLife	12	19	PG20/1	70046633	8727900700466	8727900700473	35
12275NAC1	PSY19W	HiPerVision	12	19	PG20/2	52735233	8711559527352	8727900699364	35
12086FFC1	PS24W	HiPerVision	12	24	PG20/3	70044233	8727900700442	8727900700459	35
12276C1	PSX24W	HiPerVision	12	24	PG20/7	69676933	8727900696769	8727900699395	35
12190NAC1	PY24W	HiPerVision	12	24	PGU20/4	69690533	8727900696905	8727900699357	35
12274SV+C1	PY24	HiPerVision SilverVision	12	24	PGU20/4	69678333	8727900696783	8727900699371	35
12188NAC1	PSY24W	HiPerVision	12	24	PG20/4	69668433	8727900696684	8727900699340	35
12180SV+C1	PSY24W	HiPerVision SilverVision	12	24	PG20/4	70379533	8727900703795	8727900703801	35
12278C1	PSX26W	HiPerVision	12	26	PG18.5d-3	38874933	8727900388749	8727900388756	35

12V Spare kit essentials

Ordering number	Type	Range	V	W	Base	GOC	EAN1	EAN3	Page
55472EKKM	H1	Easy Kit	12	-	-	69551928	8727900695519	8727900695533	38
55473EKKM	H4	Easy Kit	12	-	-	69555728	8727900695557	8727900695571	38
55474EKKM	H7	Easy Kit	12	-	-	69558828	8727900695588	8727900695601	38
55475EKKM	H1/H7	Easy Kit	12	-	-	69562528	8727900695625	8727900695656	38
55476EKKM	R2	Easy Kit	12	-	-	69566328	8727900695663	8727900695687	38
55005SKKM	H1	Single Kit	12	-	-	52730730	8711559527307	8711559527246	38
55007SKKM	H4	Single Kit	12	-	-	52732130	8711559527321	8711559527215	38
55008SKKM	H7	Single Kit	12	-	-	52731430	8711559527314	8711559527222	39
55010SKKM	H1/H7	Single Kit	12	-	-	30999030	8711500309990	8711500310163	39
55717EBKM	H1	Essential Box	12	-	-	70032928	8727900700329	8727900700336	40
55718EBKM	H4	Essential Box	12	-	-	70034328	8727900700343	8727900700350	40
55719EBKM	H7	Essential Box	12	-	-	70036728	8727900700367	8727900700374	40
55720EBKM	H1/H7	Essential Box	12	-	-	70038128	8727900700381	8727900700398	40
55721EBKM	R2	Essential Box	12	-	-	70040428	8727900700404	8727900700411	40

LED interior lighting for cars and trucks

Ordering number	Type	Range	V	W	Base	GOC	EAN1	EAN3	Page
129404000KX1	Festoon T14x30	X-tremeVision LED 4 000 K	12	1	SV8,5	38724730	8727900387247	8727900387254	43
128584000KX1	Festoon T10,5x38	X-tremeVision LED 4 000 K	12	1	SV8,5	70340530	8727900703412	8727900703405	43
129454000KX1	Festoon T10,5x43	X-tremeVision LED 4 000 K	12	1	SV8,5	38343030	8727900383430	8727900383447	43
129416000KX1	Festoon T14x30	X-tremeVision LED 6 000 K	12	1	SV8,5	38722330	8727900387223	8727900387230	43
128596000KX1	Festoon T10,5x38	X-tremeVision LED 6 000 K	12	1	SV8,5	70338230	8727900703399	8727900703382	43
129466000KX1	Festoon T10,5x43	X-tremeVision LED 6 000 K	12	1	SV8,5	38341630	8727900383416	8727900383423	43
129644000KX2	Wedge base	X-tremeVision LED 4 000 K	12	1	W2.1X9.5D	70347430	8727900703474	8727900703467	43
129666000KX2	Wedge base	X-tremeVision LED 6 000 K	12	1	W2.1X9.5D	70344330	8727900703450	8727900703443	43
129326700KX2	Wedge base	X-tremeVision LED 6 700 K	12	1	W2.1X9.5D	70345030	8727900386929	8727900386936	43
12956X2	CANbus control unit	-	12	5	-	38345430			

Ordering number	Type	Range	V	W	Base	GOC	EAN1	EAN3	Page
13336MDBVB1	H3	MasterDuty BlueVision	24	70	PK22s	77488030	8711500774880	8711500774910	54
13336MDB1	H3	MasterDuty	24	70	PK22s	77459030	8711500774590	8711500774613	54
13336MDC1	H3	MasterDuty	24	70	PK22s	77460660	8711500774606	8711500774637	54
13342MLC1	H4	MasterLife	24	75/70	P43t-38	82571160	8711500825711	8711500825728	54
13342MDBVS2	H4	MasterDuty BlueVision	24	75/70	P43T	53275328	8727900532753	8727900532760	54
13342MDBVB1	H4	MasterDuty BlueVision	24	75/70	P43T	53281430	8727900532814	8727900532821	54
13342MDB1	H4	MasterDuty	24	75/70	P43t-38	82587230	8711500825872	8711500825889	54
13342MDC1	H4	MasterDuty	24	75/70	P43t-38	82579760	8711500825797	8711500825803	54
13972MLC1	H7	MasterLife	24	70	PX26d	82573560	8711500825735	8711500825742	55
13972MDBVS2	H7	MasterDuty BlueVision	24	70	PX26d	53277728	8727900532777	8727900532784	55
13972MDBVB1	H7	MasterDuty BlueVision	24	70	PX26d	53279130	8727900532791	8727900532807	55
13972MDB1	H7	MasterDuty	24	70	PX26d	82589630	8711500825896	8711500825902	55
13972MDC1	H7	MasterDuty	24	70	PX26d	82581060	8711500825810	8711500825827	55
24362MLC1	H11	MasterLife	24	70	PGJ19-2	82575944	8711500825759	8711500825766	55
24362MDC1	H11	MasterDuty	24	70	PGJ19-2	82583460	8711500825834	8711500825841	55
13620C1	R2	Standard	24	55/50	P45t-41	40087160	8711500400871	8711500414793	55
13498MLCP	P21W	MasterLife	24	21	BA15s	69961673	8727900699616	8727900699630	55
13498MDCP	P21W	MasterDuty	24	21	BA15s	69949473	8727900699494	8727900699517	55
13498B2	P21W	Standard	24	21	BA15s	40455830	8711500404558	8711500404549	56
13498CP	P21W	Standard	24	21	BA15s	48415473	8711500484154	8711500484178	56
13499B2	P21W	Standard	24	21/5	BAY15d	40456530	8711500404565	8711500405371	56
13499CP	P21W	Standard	24	21/5	BAY15d	48424673	8711500484246	8711500484260	56
13496MLCP	P21W	MasterLife	24	21	BAU15s	69964773	8727900699647	8727900699661	56
13401CP	Stop P22	Standard	24	15	BA15s	87826773	8711500878267	8711500878281	56
13402CP	Stop P22	Standard	24	15	BA15d	87836673	8711500878366	8711500878380	56
13445CP	Stop P25	Standard	24	18	BA15s	48443773	8711500484437	8711500484451	56
13821MLCP	R5W	MasterLife	24	5	BA15s	69970873	8727900699708	8727900699722	56
13821MDCP	R5W	MasterDuty	24	5	BA15s	69955573	8727900699555	8727900699579	56
13821B2	R5W	Standard	24	5	BA15s	40453430	8711500404534	8711500404525	56
13821CP	R5W	Standard	24	5	BA15s	48338673	8711500483386	8711500483409	56
13814MLCP	R10W	MasterLife	24	10	BA15s	69967873	8727900699678	8727900699692	57
13814MDCP	R10W	MasterDuty	24	10	BA15s	69952473	8727900699524	8727900699548	57
13814B2	R10W	Standard	24	10	BA15s	40452730	8711500404527	8711500404527	57
13814CP	R10W	Standard	24	10	BA15s	48344773	8711500483447	8711500483461	57
13929MLCP	T4W	MasterLife	24	4	BA9s	69976073	8727900699760	8727900699784	57
13929MDCP	T4W	MasterDuty	24	4	BA9s	69958673	8727900699586	8727900699609	57
13929B2	T4W	Standard	24	4	BA9s	40454130	8711500404541	8711500404532	57
13929CP	T4W	Standard	24	4	BA9s	21985573	8711500219855	8711500219879	57
13910CP	T2W	Standard	24	3	BA9s	21955873	8711500219558	8711500219572	57
13913CP	T3W	Standard	24	2	BA9s	22003573	8711500220035	8711500220059	57
24356CP	H21W	Standard	24	21	BAY9s	87615773	8711500876157	8711500876171	57
13256CP	W3W	Standard	24	3	W2,1x9,5d	48141273	8711500481412	8711500481436	58
13960CP	W2,5W	Standard	24	2,5	W2,1x9,5d	48147473	8711500481474	8711500481498	58
13961B2	W5W	Standard	24	5	W2,1x9,5d	52420730	8711559524207	8711559524214	58
13961CP	W5W	Standard	24	5	W2,1x9,5d	48138273	8711500481382	8711500481405	58
13516CP	WBT5	Standard	24	1,2	W2x4,6d	48306573	8711500483065	8711500483089	58
13521CP	WBT5	Standard	24	1	W2x4,6d	48324973	8711500483249	8711500483263	58
13974CP	WBT5	Standard	24	2	W2x4,6d	48318873	8711500483188	8711500483201	58
13597CP	Bax 8,3s/1,35 grey	Standard	24	1,2	Bax 8,3s/1,35 grey	48384373	8711500483843	8711500483867	58
13598CP	Bax 8,5d/2 grey	Standard	24	1,2	Bax 8,5d/2 grey	48390473	8711500483904	8711500483928	58
24032CP	Bax 8,5d brown	Standard	24	1,2	Bax 8,5d brown	48852773	8711500488527	8711500488541	58
24029CP	Bax 8,5d/2 yellow	Standard	24	1,2	Bax 8,5d/2 yellow	48402473	8711500484024	8711500484048	58
13818CP	Festoon T6,2x27	Standard	24	3	SV6	48464273	8711500484642	8711500484666	58
13848CP	Festoon T6,2x35	Standard	24	3	SV6	48470373	8711500484703	8711500484727	58
13854CP	Festoon T10,5x38 10W	Standard	24	10	SV8,5	48251873	8711500482518	8711500482532	59
13844B2	C5W	Standard	24	5	SV8,5	40463330	8711500404633	8711500405388	59
13844CP	C5W	Standard	24	5	SV8,5	48197973	8711500481979	8711500481993	59
13864CP	Festoon T10,5x43 5W	Standard	24	5	SV8,5	48233473	8711500482334	8711500482358	59
13866CP	Festoon T10,5x43 10W	Standard	24	10	SV8,5	48245773	8711500482457	8711500482471	59
13807CP	Festoon T15x43	Standard	24	18	SV8,5	48294573	8711500482945	8711500482969	59
13850CP	Festoon T15x43	Standard	24	15	SV8,5	48288473	8711500482884	8711500482907	59
55554SKMDKM	MiniKit H4	MasterDuty	24	-	-	69586130	8727900695861	8727900695885	60

55555SKMDKM	MiniKit H7	MasterDuty	24	-	-	69590830	8727900695908	8727900695939	60
55559LKMDKM	MaxiKit H4	MasterDuty	24	-	-	69684494	8727900696844	8727900696851	60
55560LKMDKM	MaxiKit H7	MasterDuty	24	-	-	69686894	8727900696868	8727900696875	60
55561LKMDKM	MaxiKit H1/H7	MasterDuty	24	-	-	69688294	8727900696882	8727900696899	60

12V Two-wheeler lighting

Ordering number	Type	Range	V	W	Base	GOC	EAN1	EAN3	Page
12342PRBW	H4	Vision Moto	12	60/55	P43t-38	49024730	8711500490247	8711500490254	66
12342CTVBW	H4	CityVision Moto	12	60/55	P43t-38	39896030	8727900398960	8727900398977	66
12342XVBW	H4	X-tremeVision Moto	12	60/55	P43t-38	36229930	8727900362299	8727900362305	66
12342BVUBW	H4	BlueVision Moto	12	60/55	P43t-38	36231230	8727900362312	8727900362329	66
12972PRBW	H7	Vision Moto	12	55	PX26d	49026130	8711500490261	8711500490278	66
12972CTVBW	H7	CityVision Moto	12	55	PX26d	39898430	8727900398984	8727900398991	66
12972XVBW	H7	X-tremeVision Moto	12	55	PX26d	35151430	8727900351514	8727900351521	66
12972BVUBW	H7	BlueVision Moto	12	55	PX26d	35153830	8727900351538	8727900351545	66
12636BW	HS1	Vision Moto	12	35/35	PX43t	53035330	8727900530353	8727900530360	66
12636CTVBW	HS1	CityVision Moto	12	35/35	PX43t	39894630	8727900398946	8727900398953	67
12728BW	S2	Standard	12	35/35	BA20d	77385230	8711500773852	8711500773869	67
12008BW	S3	Standard	12	15	P26s	77381430	8711500773814	8711500773845	67
12008C1	S3	Standard	12	15	P26s	77394460	8711500773944	8711500773951	67
12256B2	W3W	Standard	12	3	W2,1x9,5d	52410830	8711559524108	8711559524122	67
12256CP	W3W	Standard	12	3	W2,1x9,5d	48144373	8711500481443	8711500481467	67
12498B2	P21W	Standard	12	21	BA15s	5549130	871150055491	8711559520131	67
12498CP	P21W	Standard	12	21	BA15s	49078073	8711500490780	8711500490803	67
12499EDBW	P21/5W	ExtraDuty	12	21/5	BAY15d	87900430	8711500879004	8711500879035	67

Headlight restoration kit

Ordering number	GOC	EAN1	EAN3	Page
HRK00XM	38819031	8727900399769	8727900399776	69

LED Bike lighting solutions

Ordering number	Type	Range	V	W	GOC	EAN1	EAN3	Page
SRFB40BLX1	Battery-powered	Saferide LED Bikelight 40	5	2,4	35147733	8727900351477	8727900351484	75
SRFD40BLSX1	Dynamo-powered	Saferide LED Bikelight 40	6	2,4	35143933	8727900351439	8727900351446	75
BF60L60BALX1	Dynamo-powered	Saferide LED Bikelight 60	6	2,4	35053133	8727900350531	8727900350548	75
BF60L60BBLX1	Dynamo-powered	Saferide LED Bikelight 60	6	2,4	35055533	8727900350555	8727900350562	75
SRFB80BLX1	Battery-powered	Saferide LED Bikelight 80	4,8	6	38760533	8727900387605	8727900387612	75
SRFB80WHX1	Battery-powered	Saferide LED Bikelight 80	4,8	6	38762933	8727900387629	8727900387636	75
AR800DBX1	Battery-powered with silicon battery pack	Dual beam 800	12,6	28	38736033	8727900387360	8727900387377	75
SRRLRBNBX1	Battery-powered	LED Rearlight Lumiring	6	0,6	35137828	8727900351378	8727900351385	75
SRRLRBBX1	Battery-powered	LED Rearlight Lumiring	6	0,6	35139228	8727900351392	8727900351408	75
SRDLRBLX1	Dynamo-powered	LED Rearlight Lumiring	6	0,6	35141528	8727900351415	8727900351422	75
SRRLGBLBX1	Battery-powered	LED Rearlight Lighttring	6	0,6	38740731	8727900387407	8727900387414	75
SRRLGBLX1	Battery-powered	LED Rearlight Lighttring	6	0,6	38742131	8727900387421	8727900387438	75
SRDLGBLX1	Dynamo-powered	LED Rearlight Lighttring	6	0,6	38744531	8727900387445	8727900387452	75
n/a	Standard handlebar bracket	-	-	-	35057930	8727900350579	8727900350586	76
BA003X1	3D axis handlebar bracket	-	-	-	39962230	8727900399622	8727900399639	76
BA002	Seatpost holder	-	-	-	39914130	8727900399141	8727900399158	76
BA004X1	Silicon battery pack	Activeide	-	-	39964633	8727900399646	8727900399639	76

LED Inspection and LED Work lamps

Ordering number	Type	Plug	V	W	GOC	EAN1	EAN3	Page
SRFB40BLX1	LED Penlight Professional	-	4,5	1,3	38819031	8727900388190	8727900388206	83
LPL03RECHX1	LED Penlight Premium	EU	100-240	6	38752033	8727900387520	8727900387537	83
LPL03RECHX1	LED Penlight Premium	UK	100-240	6	38754433	8727900387544	8	

